

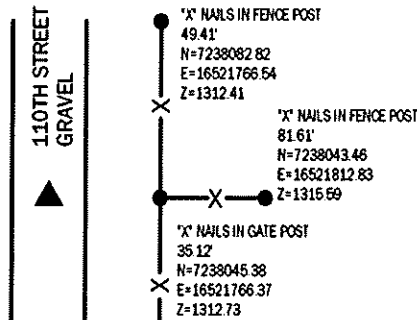
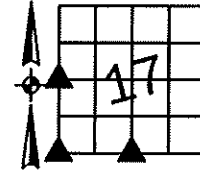
Sara Meseck, RECORDER
 Crawford County, Iowa
 Instr. Number: 2024-1865
 Recorded: 10/11/2024 at 8:53:33.0 AM
 Pages 1
 County Recording Fee: \$7.00
 Iowa E-Filing Fee: \$3.13
 Combined Fee: \$10.13
 Revenue Tax:

PREPARED BY AND RETURN TO: MIKE SCHULTE, SCHULTE SURVEYING, INC., 2003 390TH STREET, WESTSIDE, IA 51467 (712) 790-3489

UNITED STATES PUBLIC LAND SURVEY CORNER CERTIFICATE OF
 LAND SURVEY MONUMENTS SITUATED IN SECTION 17, TOWNSHIP 83 NORTH, RANGE 41 WEST, OF THE FIFTH
 PRINCIPAL MERIDIAN, CRAWFORD COUNTY, IOWA. PREVIOUSLY RECORDED IN SEE BELOW IN COUNTY
(book, page instrument number)
 RECORDER'S OFFICE.

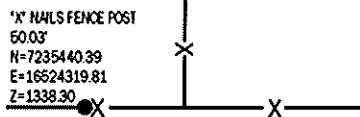
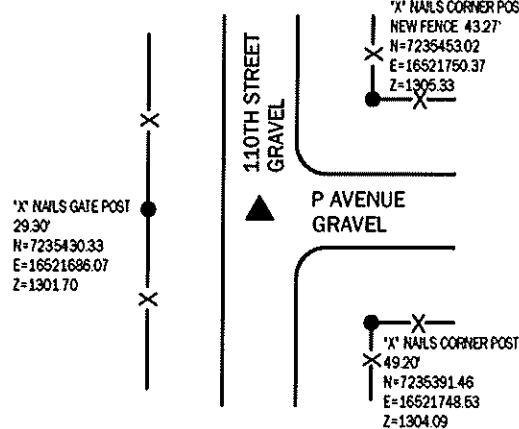
W1/4 CORNER
 FND 1/2" REBAR

N=7238048.13 E=16521731.35 Z=1311.70
 USED COUNTY ENGINEER'S RECORDS AND PLAT RECORDED IN INSTRUMENT
 #85-3596 TO FIND A 1/2" REBAR. VERIFIED WITH SURROUNDING EVIDENCE.
 THIS CERTIFICATE IS BEING FILED DUE TO NONE OF RECORD.

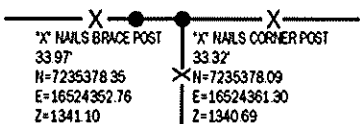


SW CORNER

SET 5/8" REBAR YPC #17979 3" DEEP
 N=7235427.71 E=16521715.26 Z=1301.67
 USED COUNTY ENGINEER'S RECORDS AND FOUND NAIL 1'
 DEEP. SET A 5/8" REBAR YPC #17979 3" DEEP OVER TOP NAIL
 AND OVER CONCRETE MONUMENT REPORTED AS 5.5' DEEP.
 THIS CERTIFICATE IS BEING FILED DUE TO NONE OF RECORD.



P AVENUE CORNER
 GRAVEL



S1/4 CORNER

SET 5/8" REBAR YPC #17979 3" DEEP
 N=7235411.40 E=16524360.59 Z=1338.47
 USED COUNTY ENGINEER'S RECORDS AND A METAL LOCATOR TO
 SEARCH AREA, FOUND NOTHING. SET 5/8" REBAR YPC #17979 AT
 MIDPOINT BETWEEN THE SOUTHWEST CORNER AND SOUTHEAST
 CORNER, AT CENTER OF RIGHT OF WAY.
 THIS CERTIFICATE IS BEING FILED DUE TO NONE OF RECORD.

LIST CORNERS TO BE INDEXED

CORNER	SECTION	TWP	RANGE
W1/4 CORNER	17	83	41
E1/4 CORNER	18	83	41
S1/4 CORNER	17	83	41
N1/4 CORNER	20	83	41
SW CORNER	17	83	41
SE CORNER	18	83	41
NE CORNER	19	83	41
NW CORNER	20	83	41

BASIS OF BEARING

IA RCS ZONE 6 - US SURVEY FEET
 1687TH DERIVED - NAD83(2011) EPOCH 2010.00)

*All distances are measured horizontally unless noted.

I HEREBY CERTIFY THAT THIS LAND SURVEYING DOCUMENT WAS
 PREPARED BY ME OR UNDER MY DIRECT PERSONAL SUPERVISION AND
 THAT I AM A DULY LICENSED PROFESSIONAL LAND SURVEYOR UNDER
 THE LAWS OF THE STATE OF IOWA.

Mike Schulte
 MIKE SCHULTE
 LICENSE NUMBER: 17979
 LICENSE RENEWAL DATE IS DECEMBER 31, 2026
 PAGES COVERED BY THIS SEAL: 1 OF 1



SCHULTE SURVEYING, INC.

DRAWN BY: SLG
 PROJ NUMBER: 24-053