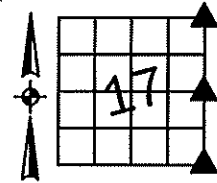


Sara Meseck, RECORDER
 Crawford County, Iowa
 Instr. Number: 2024-1864
 Recorded: 10/11/2024 at 8:53:33.0 AM
 Pages 1
 County Recording Fee: \$7.00
 Iowa E-Filing Fee: \$3.13
 Combined Fee: \$10.13
 Revenue Tax:

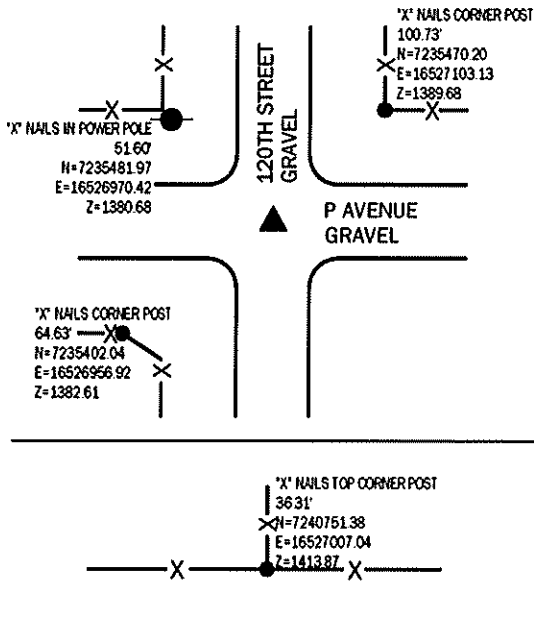
PREPARED BY AND RETURN TO: MIKE SCHULTE, SCHULTE SURVEYING, INC., 2003 390TH STREET, WESTSIDE, IA 51467 (712) 790-3489

UNITED STATES PUBLIC LAND SURVEY CORNER CERTIFICATE OF
 LAND SURVEY MONUMENTS SITUATED IN SECTION 17, TOWNSHIP 83 NORTH, RANGE 41 WEST, OF THE FIFTH
 PRINCIPAL MERIDIAN, CRAWFORD COUNTY, IOWA. PREVIOUSLY RECORDED IN SEE BELOW IN COUNTY
(book, page instrument number)



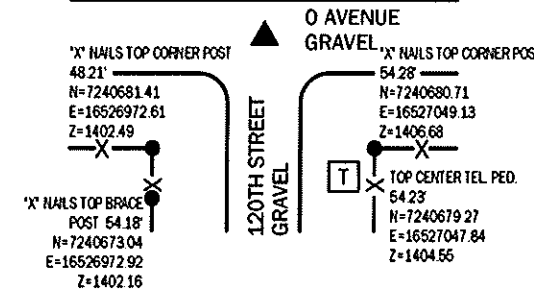
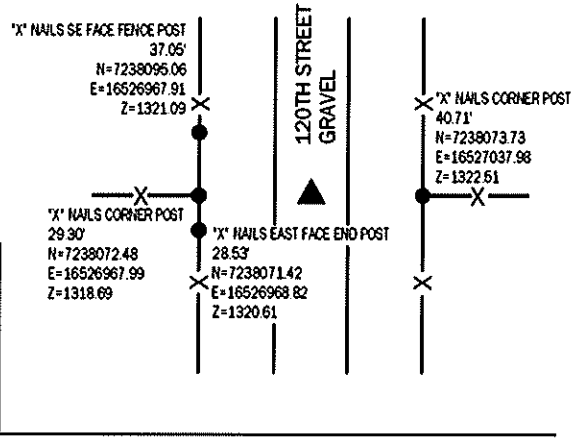
SE CORNER

FND 3/4" PINCHED PIPE 5" DEEP
 N=7235444.37 E=16527005.76 Z=1379.66
 USED CERTIFICATE RECORDED IN INSTRUMENT #2022-2851 AND A METAL LOCATOR
 TO FIND A 3/4" PINCHED PIPE 5" DEEP. VERIFIED WITH 2 REMAINING TIES.
 THIS CERTIFICATE IS BEING FILED TO UPDATE THE REFERENCE TIES.



E1/4 CORNER

FND BROKEN CONCRETE MONUMENT 3" DEEP
 N=7238072.50 E=16526997.29 Z=1319.19
 USED CERTIFICATE RECORDED IN INSTRUMENT #2022-2851 TO
 FIND A BROKEN CONCRETE MONUMENT 3" DEEP. VERIFIED WITH
 3 REMAINING TIES.
 THIS CERTIFICATE IS BEING FILED TO UPDATE THE REFERENCE TIES.



NE CORNER

FND 5/8" REBAR OPC #14709 10" DEEP
 N=7240715.07 E=16527007.11 Z=1404.66
 USED CERTIFICATE RECORDED IN FEE BOOK 2007-2917 AND A
 METAL LOCATOR TO FIND A 5/8" REBAR OPC #14709 10" DEEP.
 VERIFIED WITH 5 REMAINING TIES.
 THIS CERTIFICATE IS BEING FILED TO UPDATE THE REFERENCE TIES.

LIST CORNERS TO BE INDEXED

CORNER	SECTION	TWP	RANGE
SE CORNER	17	83	41
SW CORNER	16	83	41
NW CORNER	21	83	41
NE CORNER	20	83	41
E1/4 CORNER	17	83	41
W1/4 CORNER	16	83	41
NE CORNER	17	83	41
NW CORNER	16	83	41
SW CORNER	9	83	41
SE CORNER	8	83	41

BASIS OF BEARING

IA RCS ZONE 6 - US SURVEY FEET
 IARITH DERIVED - NAD83(2011)(EPOCH 2010.00)

*All distances are measured horizontally unless noted.

I HEREBY CERTIFY THAT THIS LAND SURVEYING DOCUMENT WAS
 PREPARED BY ME OR UNDER MY DIRECT PERSONAL SUPERVISION AND
 THAT I AM A DAILY LICENSED PROFESSIONAL LAND SURVEYOR UNDER
 THE LAWS OF THE STATE OF IOWA.

Mike Schulte
 MIKE SCHULTE
 LICENSE NUMBER: 17979
 LICENSE RENEWAL DATE IS DECEMBER 31, 2025
 PAGES COVERED BY THIS SEAL: 1 OF 1

