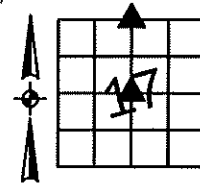


Sara Meseck, RECORDER  
 Crawford County, Iowa  
 Instr. Number: 2024-1863  
 Recorded: 10/11/2024 at 8:53:33.0 AM  
 Pages 1  
 County Recording Fee: \$7.00  
 Iowa E-Filing Fee: \$3.13  
 Combined Fee: \$10.13  
 Revenue Tax:

PREPARED BY AND RETURN TO: MIKE SCHULTE, SCHULTE SURVEYING, INC., 2003 390TH STREET, WESTSIDE, IA 51467 (712) 790-3489

**UNITED STATES PUBLIC LAND SURVEY CORNER CERTIFICATE OF**  
 LAND SURVEY MONUMENTS SITUATED IN SECTION 17, TOWNSHIP 83 NORTH, RANGE 41 WEST, OF THE FIFTH  
 PRINCIPAL MERIDIAN, CRAWFORD COUNTY, IOWA. PREVIOUSLY RECORDED IN SEE BELOW IN COUNTY  
(book, page instrument number)  
 RECORDER'S OFFICE.



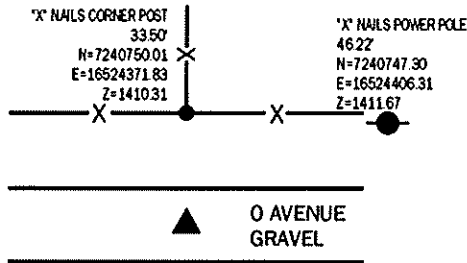
**N1/4 CORNER**

SET 5/8" REBAR YPC #17979

N=7240716.51 E=16524371.83 Z=1407.06

USED COUNTY ENGINEER'S RECORDS AND A METAL LOCATOR TO SEARCH AREA, FOUND NOTHING. GRADING PLANS SHOW CUT IN THIS AREA. USED GRADING PLANS AND ENGINEER'S TIES TO RE-SET MONUMENT.

THIS CERTIFICATE IS BEING FILED DUE TO NONE OF RECORD.



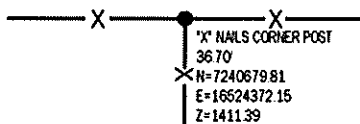
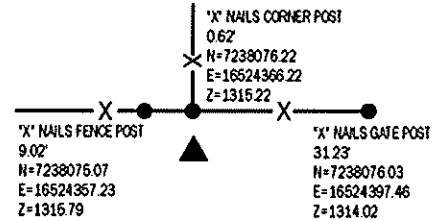
**CENTER**

SET 5/8" REBAR YPC #17979

N=7238075.60 E=16524366.24 Z=1314.30'

NO RECORD OF CORNER. LOCATED SURROUNDING SECTION CORNERS AND EXAMINED OLD AERIALS. SET 5/8" REBAR YPC #17979 ON-LINE BETWEEN S1/4 CORNER AND N1/4 CORNER AND AT CORNER POST.

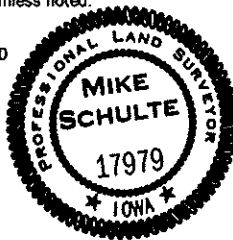
THIS CERTIFICATE IS BEING FILED DUE TO NONE OF RECORD.



\*All distances are measured horizontally unless noted.

I HEREBY CERTIFY THAT THIS LAND SURVEYING DOCUMENT WAS PREPARED BY ME OR UNDER MY DIRECT PERSONAL SUPERVISION AND THAT I AM A DULY LICENSED PROFESSIONAL LAND SURVEYOR UNDER THE LAWS OF THE STATE OF IOWA.

*Mike Schulte*  
 MIKE SCHULTE  
 LICENSE NUMBER 17979  
 LICENSE RENEWAL DATE IS DECEMBER 31, 2025  
 PAGES COVERED BY THIS SEAL: 1 OF 1



**LIST CORNERS TO BE INDEXED**

CORNER	SECTION	TWP	RANGE
N1/4 CORNER	17	83	41
S1/4 CORNER	8	83	41
CENTER	17	83	41

**BASIS OF BEARING**

IA RCS ZONE 6 - US SURVEY FEET  
 IA RTH DERIVED - NAD83(2011)(EPOCH 2010.00)