

INDEXED _____
 FOLLOW UP WJ
 PROOFED DM
 SCANNED WJ

REC011643



Crawford County Recorder Denise Meeves
 FEE BOOK 2006-2411 8/18/2006 @ 10:48AM
 PLC PLAT CORNER CERBook: Page: #: 1
 Total Fees: \$7.00

PREPARED BY & RETURN TO MICHAEL G. GEIER, SNYDER & ASSOCIATES, INC. 2727 SW SNYDER ROAD, ANKENY, IOWA 50023 (888) 964-2020

UNITED STATES PUBLIC LAND SURVEY CORNER CERTIFICATE OF

Land Survey Monuments situated in Section 4, Township 84, Range 37, of the Fifth Principal Meridian, CRAWFORD County, Iowa.
 Previously recorded in N/A in County Recorder's Office.
 (book, page, document number, ect.)

(Show reason for preparing this certificate, the evidence and detailed procedures used in establishing the corner positions and monumentation found or placed.)

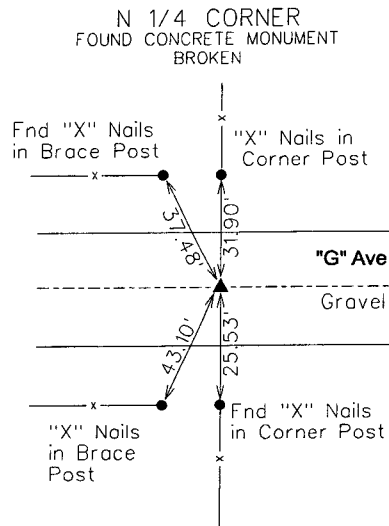
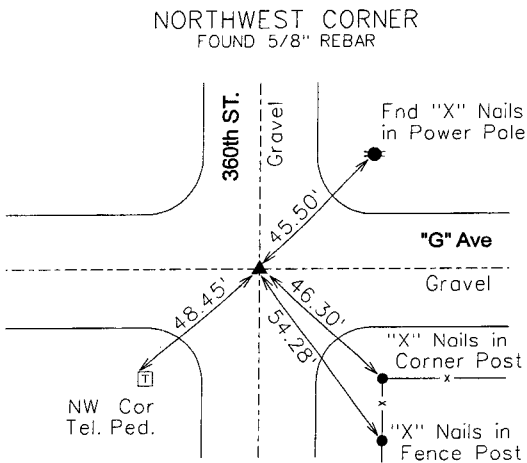
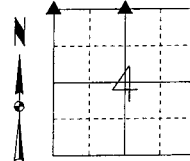
Monument Description and Remarks:

NORTHWEST CORNER - FOUND 5/8" REBAR IN @ 360th STREET AND @ "G" AVENUE 20" DEEP USING COUNTY ENGINEER SECTION CORNER TIES AND RETIED SECTION CORNER.

NORTH 1/4 CORNER - FOUND CONCRETE MONUMENT BROKEN IN @ "G" AVENUE USING EXISTING TIES AND RETIED SECTION CORNER.

Plan-View

(Show a minimum of three reference ties to durable physical objects, relevant monuments and physical conditions that will enable recovery of the corner.)



I hereby certify that this land surveying document was prepared and the related surveying work was performed by me or under my direct supervision and that I am a duly licensed Land Surveyor under the laws of the State of Iowa.

Michael G. Geier 8-10-06
 Michael G. Geier, PLS Date

License Number 11804
 My License Renewal Date is December 31, 2007

Pages or sheets covered by this seal:
 SHEET 1 OF 1

List Corners to be Indexed

Corners	Section	Twp	Range
NW COR	4	84	37
NE COR	5	84	37
SW COR	33	85	37
SE COR	32	85	37
N 1/4 COR	4	84	37
S 1/4 COR	33	85	37

TECH: JDP

PN: 84-37-04 (105.1255)

DATE: 04/06/06