

INDEXED *KM*  
 FOLLOW UP \_\_\_\_\_  
 PROOFED \_\_\_\_\_  
 SCANNED \_\_\_\_\_

Instrument #: 2018-1930  
 09/19/2018 08:27:33 AM Total Pages: 1  
 PLC PLAT CORNER CER  
 Recording Fee: \$0.00 Transfer Tax: \$0  
 Denise Meeves, Recorder, Crawford County Iowa



PREPARED BY: PAUL ASSMAN-CRAWFORD COUNTY ENGINEER'S OFFICE-COURTHOUSE-DENISON, IA.-712-263-2449

## UNITED STATES PUBLIC LAND SURVEY CORNER CERTIFICATE OF

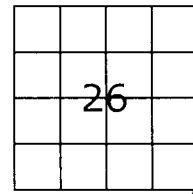
LAND SURVEY MONUMENT SITUATED IN WESTSIDE TOWNSHIP, THE SOUTHEAST CORNER OF SECTION 26,  
T-84N, R-37W OF THE FIFTH P.M. CRAWFORD COUNTY, IOWA.

PREVIOUSLY RECORDED AS NO. 2006-2422

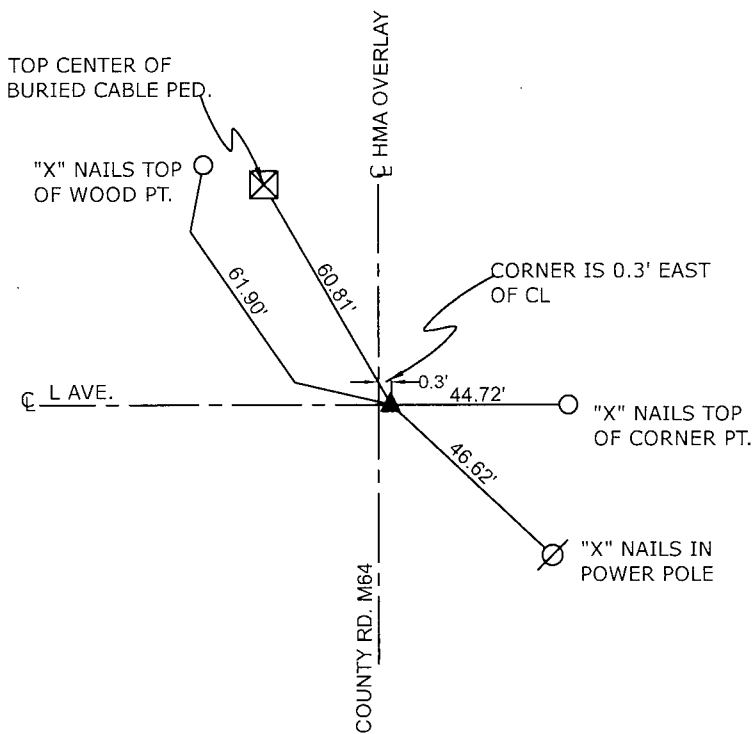
### MONUMENT DESCRIPTION AND REMARKS

SOUTHEAST CORNER SEC. 26-84-37

FOUND PK NAIL IN ACCORDANCE WITH PREVIOUS TIES.  
 COUNTY COMPLETED HMA OVERLAY, PROJECT NO.  
 FM-C024(117). SET 1/2" CARRIAGE BOLT AT SURFACE  
 AND RETIED CORNER.



SOUTHEAST CORNER SEC. 26-84-37



ALL DISTANCES ARE SLOPE CHAINED

**CERTIFICATION:**

I HEREBY CERTIFY THAT THIS LAND SURVEYING DOCUMENT WAS PREPARED AND THE RELATED SURVEY WORK WAS PERFORMED BY ME OR UNDER MY DIRECT PERSONAL SUPERVISION AND THAT I AM A DULY LICENSED LAND SURVEYOR UNDER THE LAWS OF THE STATE OF IOWA.

*Paul J. Assman*  
 Signature

*7/31/18*  
 Date of Survey

PAUL J. ASSMAN 11982  
 Typed Name L.S. No.

12-31-18  
 License Renewal Date

Pages covered by this seal 1

