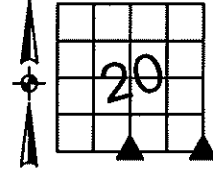


Sara Meseck, RECORDER  
 Crawford County, Iowa  
 Instr. Number: 2024-1848  
 Recorded: 10/8/2024 at 8:39:38.0 AM  
 Pages 1  
 County Recording Fee: \$7.00  
 Iowa E-Filing Fee: \$3.13  
 Combined Fee: \$10.13  
 Revenue Tax:

PREPARED BY AND RETURN TO: MIKE SCHULTE, SCHULTE SURVEYING, INC., 2003 390TH STREET, WESTSIDE, IA 51467 (712) 790-3489

**UNITED STATES PUBLIC LAND SURVEY CORNER CERTIFICATE OF**  
 LAND SURVEY MONUMENTS SITUATED IN SECTION 20, TOWNSHIP 85 NORTH, RANGE 41 WEST, OF THE FIFTH  
 PRINCIPAL MERIDIAN, CRAWFORD COUNTY, IOWA. PREVIOUSLY RECORDED IN SEE BELOW IN COUNTY  
(book, page instrument number)  
 RECORDER'S OFFICE.

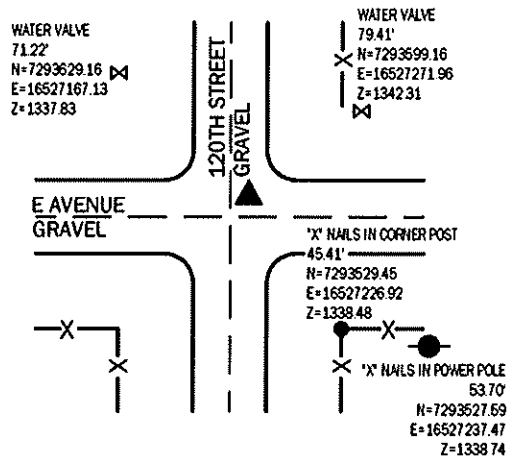
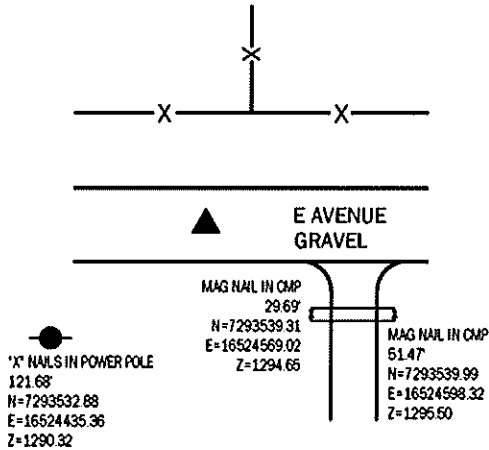


**S1/4 CORNER**

FND 5/8" REBAR YPC #14808, 6" DEEP  
 N=7293564.25 E=16524552.92 Z=1295.19  
 USED CERTIFICATE RECORDED IN FEE BOOK 2009-1722 AND A  
 METAL LOCATOR TO FIND A 5/8" REBAR YPC #14808 6" DEEP.  
 VERIFIED WITH SURROUNDING FIELD EVIDENCE.  
 THIS CERTIFICATE IS BEING FILED TO UPDATE THE REFERENCE TIES.

**SE CORNER**

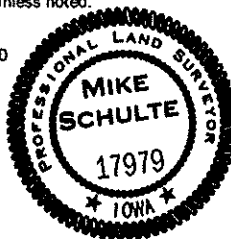
FND 3/4" PIPE 12" DEEP  
 N=7293565.91 E=16527199.85 Z=1337.60  
 USED CERTIFICATE RECORDED IN FEE BOOK 2005-0454 AND A  
 METAL LOCATOR TO FIND A 3/4" PIPE 12" DEEP, 6.5' NORTH OF E  
 AVENUE CENTERLINE AND 1.5' EAST OF 120TH STREET CENTERLINE.  
 VERIFIED WITH 4 REMAINING TIES.  
 THIS CERTIFICATE IS BEING FILED TO UPDATE THE REFERENCE TIES.



\*All distances are measured horizontally unless noted.

I HEREBY CERTIFY THAT THIS LAND SURVEYING DOCUMENT WAS  
 PREPARED BY ME OR UNDER MY DIRECT PERSONAL SUPERVISION AND  
 THAT I AM A DULY LICENSED PROFESSIONAL LAND SURVEYOR UNDER  
 THE LAWS OF THE STATE OF IOWA.

*Mike Schulte*  
 MIKE SCHULTE  
 LICENSE NUMBER: 17979  
 LICENSE RENEWAL DATE IS DECEMBER 31, 2025  
 PAGES COVERED BY THIS SEAL: 1 OF 1



**LIST CORNERS TO BE INDEXED**

CORNER	SECTION	TWP	RANGE
S1/4 CORNER	20	85	41
N1/4 CORNER	29	85	41
SE CORNER	20	85	41
SW CORNER	21	85	41
NW CORNER	28	85	41
NE CORNER	29	85	41

**BASIS OF BEARING**

1983 ZONE 6 - US SURVEY FEET  
 1983 ZONE 6 - NAD83(2011)EPOCH 2010.00)

**SCHULTE SURVEYING, INC.**

DRAWN BY: SLG  
 PROJ NUMBER: 24-077