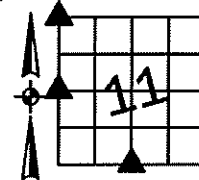


Sara Mesack, RECORDER
 Crawford County, Iowa
 Instr. Number: 2024-1621
 Recorded: 9/6/2024 at 11:03:21.0 AM
 Pages 1
 County Recording Fee: \$7.00
 Iowa E-Filing Fee: \$3.13
 Combined Fee: \$10.13
 Revenue Tax:

PREPARED BY AND RETURN TO: MIKE SCHULTE, SCHULTE SURVEYING, INC., 2003 390TH STREET, WESTSIDE, IA 51467 (712) 790-3489

UNITED STATES PUBLIC LAND SURVEY CORNER CERTIFICATE OF

LAND SURVEY MONUMENTS SITUATED IN SECTION 11, TOWNSHIP 83 NORTH, RANGE 40 WEST, OF THE FIFTH PRINCIPAL MERIDIAN, CRAWFORD COUNTY, IOWA. PREVIOUSLY RECORDED IN SEE BELOW IN COUNTY RECORDER'S OFFICE.
(book, page instrument number)

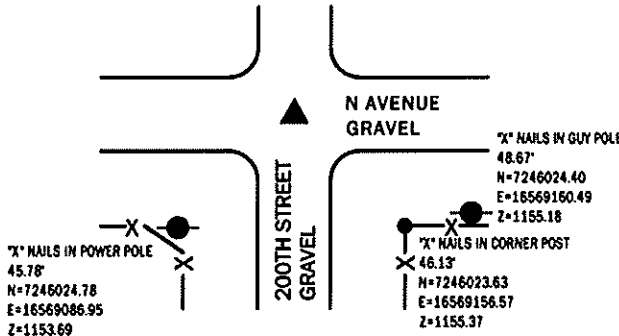


NW CORNER

FND 1/2" REBAR 5" DEEP

N=7246054.21 E=16569122.02 Z=1153.05

USED CERTIFICATE RECORDED IN INST. #2024-0436 AND A METAL LOCATOR TO FIND A 1/2" REBAR 5" DEEP. VERIFIED WITH 3 REMAINING TIES. THIS CERTIFICATE IS BEING FILED TO UPDATE THE REFERENCE TIES.

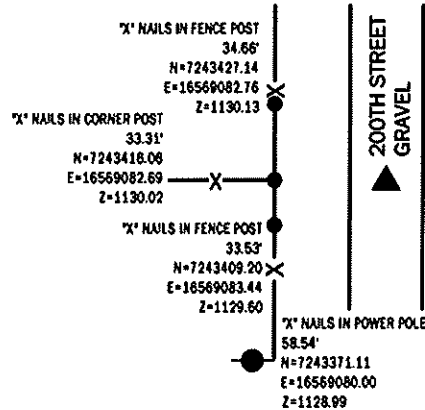


W 1/4 CORNER

FND 5/8" REBAR 6" DEEP

N=7243417.27 E=16569115.98 Z=1125.71

USED COUNTY ENGINEER'S RECORD AND A METAL LOCATOR TO FIND A 5/8" REBAR 6" DEEP. VERIFIED WITH 4 REMAINING TIES. THIS CERTIFICATE IS BEING FILED DUE TO NONE OF RECORD.

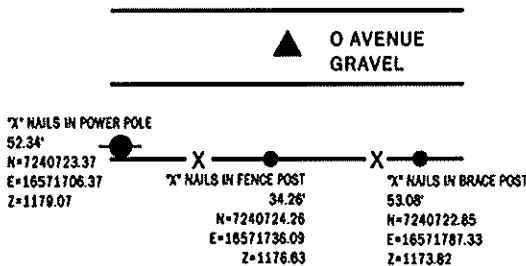


S 1/4 CORNER

FND 5/8" REBAR YPC #6806 3" DEEP

N=7240756.87 E=16571746.58 Z=1170.20

USED CERTIFICATE RECORDED IN INST. #2001-2577 AND A METAL LOCATOR TO FIND A 5/8" REBAR YPC #6806 3" DEEP. VERIFIED WITH 3 REMAINING TIES. THIS CERTIFICATE IS BEING FILED TO UPDATE THE REFERENCE TIES.



LIST CORNERS TO BE INDEXED

| CORNER | SECTION | TWP | RANGE |
|--------------|---------|-----|-------|
| NW CORNER | 11 | 83 | 40 |
| NE CORNER | 10 | 83 | 40 |
| SE CORNER | 3 | 83 | 40 |
| SW CORNER | 2 | 83 | 40 |
| W 1/4 CORNER | 11 | 83 | 40 |
| E 1/4 CORNER | 10 | 83 | 40 |
| S 1/4 CORNER | 11 | 83 | 40 |
| N 1/4 CORNER | 14 | 83 | 40 |

BASIS OF BEARING

14RCS ZONE 6 - US SURVEY FEET
 14R TN DERIVED - NAD83(2011)(EPOCH 2010.00)

*All distances are measured horizontally unless noted.

I HEREBY CERTIFY THAT THIS LAND SURVEYING DOCUMENT WAS PREPARED BY ME OR UNDER MY DIRECT PERSONAL SUPERVISION AND THAT I AM A DULY LICENSED PROFESSIONAL LAND SURVEYOR UNDER THE LAWS OF THE STATE OF IOWA.

Mike Schulte
 MIKE SCHULTE
 LICENSE NUMBER: 17979
 LICENSE RENEWAL DATE IS DECEMBER 31, 2025
 PAGES COVERED BY THIS SEAL: 1 OF 1



SCHULTE SURVEYING, INC.

DRAWN BY: SLG
 PROJ NUMBER: 24-065