

INDEX 2/1  
 SCAN \_\_\_\_\_  
 FOLLOW UP \_\_\_\_\_  
 PROOF \_\_\_\_\_

Instrument #: 2024-0434  
 03/20/2024 08:47:40 AM Total Pages: 1  
 PLC PLAT COR CERT  
 Recording Fee: \$0.00 Transfer Tax: \$0  
 Sara Meseck, Recorder, Crawford County Iowa



PREPARED BY: PAUL ASSMAN-CRAWFORD COUNTY ENGINEER'S OFFICE-COURTHOUSE-DENISON, IA.-712-263-2449

UNITED STATES PUBLIC LAND SURVEY CORNER CERTIFICATE  
 OF

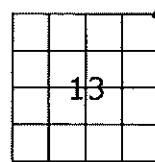
LAND SURVEY MONUMENT SITUATED IN PARADISE TOWNSHIP, NORTHEAST CORNER OF SECTION 13, T-83N,  
 R-40W OF THE FIFTH P.M. CRAWFORD COUNTY, IOWA.

PREVIOUSLY RECORDED IN PARADISE TWP. FIELD BOOK PG. 26, COUNTY ENGINEERS OFFICE

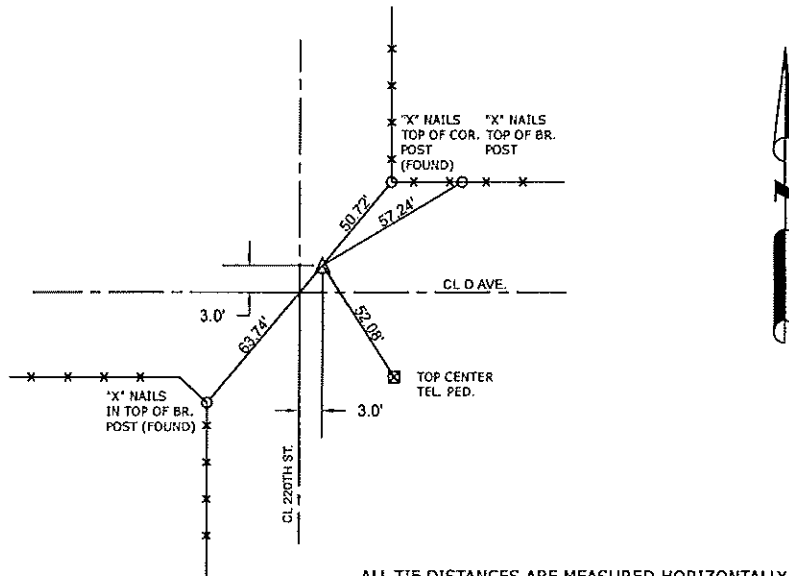
MONUMENT DESCRIPTION AND REMARKS

NORTHEAST CORNER SEC. 13-83-40

FOUND 1/2" REBAR 1.3' DEEP. COUNTY GRADED ROAD  
 AND CORNER WAS NOT DISTURBED AND REMAINS @ 1.3'  
 DEEP. CORNER WAS RETIED.



NORTHEAST CORNER SEC. 13-83-40



ALL TIE DISTANCES ARE MEASURED HORIZONTALLY USING GPS

CERTIFICATION:

I HEREBY CERTIFY THAT THIS LAND SURVEYING DOCUMENT WAS PREPARED AND THE RELATED SURVEY WORK WAS PERFORMED BY ME OR UNDER MY DIRECT PERSONAL SUPERVISION AND THAT I AM A DULY LICENSED LAND SURVEYOR UNDER THE LAWS OF THE STATE OF IOWA.

Paul J. Assman  
 Signature

3/12/24  
 Date of Survey

PAUL J. ASSMAN  
 Typed Name

11982  
 L.S. No.

12-31-24  
 License Renewal Date

Pages covered by this seal 1

