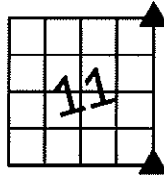


Sara Meseck, RECORDER
 Crawford County, Iowa
 Instr. Number: 2024-1620
 Recorded: 9/6/2024 at 11:03:21.0 AM
 Pages 1
 County Recording Fee: \$7.00
 Iowa E-Filing Fee: \$3.13
 Combined Fee: \$10.13
 Revenue Tax:

PREPARED BY AND RETURN TO: MIKE SCHULTE, SCHULTE SURVEYING, INC., 2003 390TH STREET, WESTSIDE, IA 51467 (712) 790-3489

UNITED STATES PUBLIC LAND SURVEY CORNER CERTIFICATE OF
 LAND SURVEY MONUMENTS SITUATED IN SECTION 11, TOWNSHIP 83 NORTH, RANGE 40 WEST, OF THE FIFTH
 PRINCIPAL MERIDIAN, CRAWFORD COUNTY, IOWA. PREVIOUSLY RECORDED IN SEE BELOW IN COUNTY
(book, page instrument number)
 RECORDER'S OFFICE.

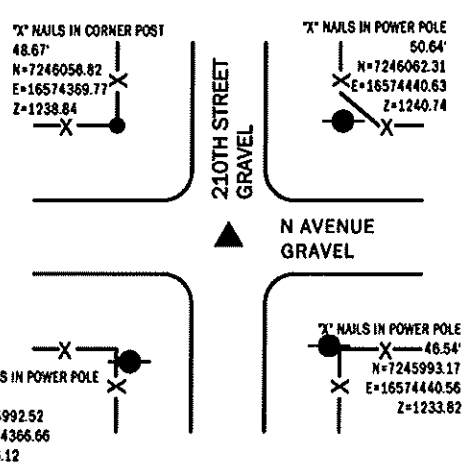
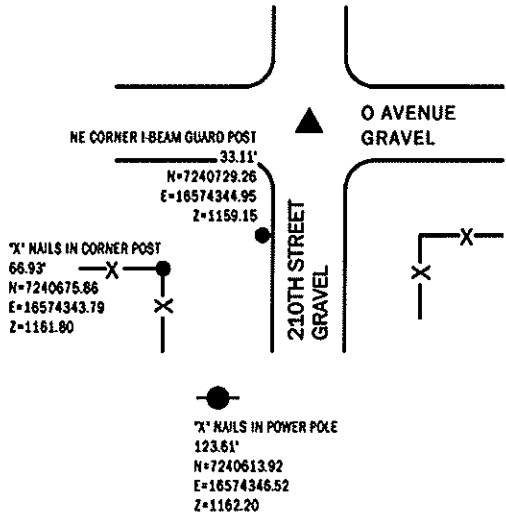


SE CORNER

FND 80D SPIKE #10318 WASHER 2' DEEP
 N=7240733.50 E=16574377.79 Z=1161.83
 USED CERTIFICATE RECORDED IN FEE BOOK 2011-1112 AND A
 METAL LOCATOR TO FIND AN 80D SPIKE WITH WASHER #10318
 2' DEEP. VERIFIED WITH 1 REMAINING TIE.
 THIS CERTIFICATE IS BEING FILED TO UPDATE THE REFERENCE TIES.

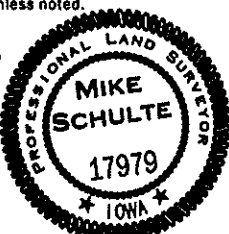
NE CORNER

FND METAL FENCE POST 1.5' DEEP
 N=7246024.89 E=16574406.50 Z=1236.80
 USED COUNTY ENGINEER'S TIES TO FIND A METAL FENCE
 POST 1.5' DEEP. VERIFIED WITH 1 REMAINING TIE.
 THIS CERTIFICATE IS BEING FILED DUE TO NONE OF RECORD.



*All distances are measured horizontally unless noted.
 I HEREBY CERTIFY THAT THIS LAND SURVEYING DOCUMENT WAS
 PREPARED BY ME OR UNDER MY DIRECT PERSONAL SUPERVISION AND
 THAT I AM A DULY LICENSED PROFESSIONAL LAND SURVEYOR UNDER
 THE LAWS OF THE STATE OF IOWA.

Mike Schulte
 MIKE SCHULTE
 LICENSE NUMBER: 17979
 LICENSE RENEWAL DATE IS DECEMBER 31, 2025
 PAGES COVERED BY THIS SEAL: 1 OF 1
 2024/09/05
 DATE



LIST CORNERS TO BE INDEXED

CORNER	SECTION	TWP	RANGE
NE CORNER	11	83	40
NW CORNER	12	83	40
SW CORNER	1	83	40
SE CORNER	2	83	40
SE CORNER	11	83	40
SW CORNER	12	83	40
NW CORNER	13	83	40
NE CORNER	14	83	40

BASIS OF BEARING
 IARCS ZONE 6 - US SURVEY FEET
 IARTN DERIVED - NAD83(2011)EPOCH 2010.00

SCHULTE SURVEYING, INC.

DRAWN BY: SLG
 PROJ NUMBER: 24-065