

INDEX _____
 SCAN _____
 FOLLOW UP _____

Instrument #: 2024-1151
 07/05/2024 11:22:59 AM Total Pages: 1
 PLC PLAT COR CERT
 Recording Fee: \$7.00 Transfer Tax: \$0
 Sara Meseck, Recorder, Crawford County Iowa



WILKE LAND SURVEYING INC. 401 1800th Street Panama, Iowa 51562 (712)579-0551

UNITED STATES PUBLIC LAND SURVEY CORNER CERTIFICATE

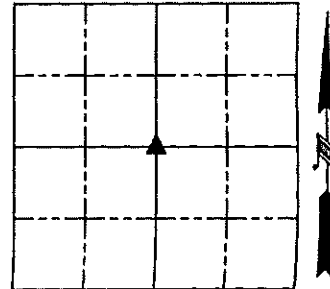
SECTION 26 TOWNSHIP 85N RANGE 39W COUNTY Crawford

Reason for Certificate: Survey in the SE1/4 SE1/4

Monument Description and Remarks:

CENTER - Set a 5/8" diameter by 24" long rebar with an orange cap PLS #17048 (0.5' deep) on line between found monuments at the E1/4 Corner & W1/4 Corner, and in line with the fence North. The monument location fits well with the intersection of fences North, East, and West. The fence corner post and brace posts are rotted off and laying on the ground. No suitable ties available.

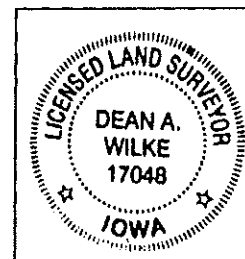
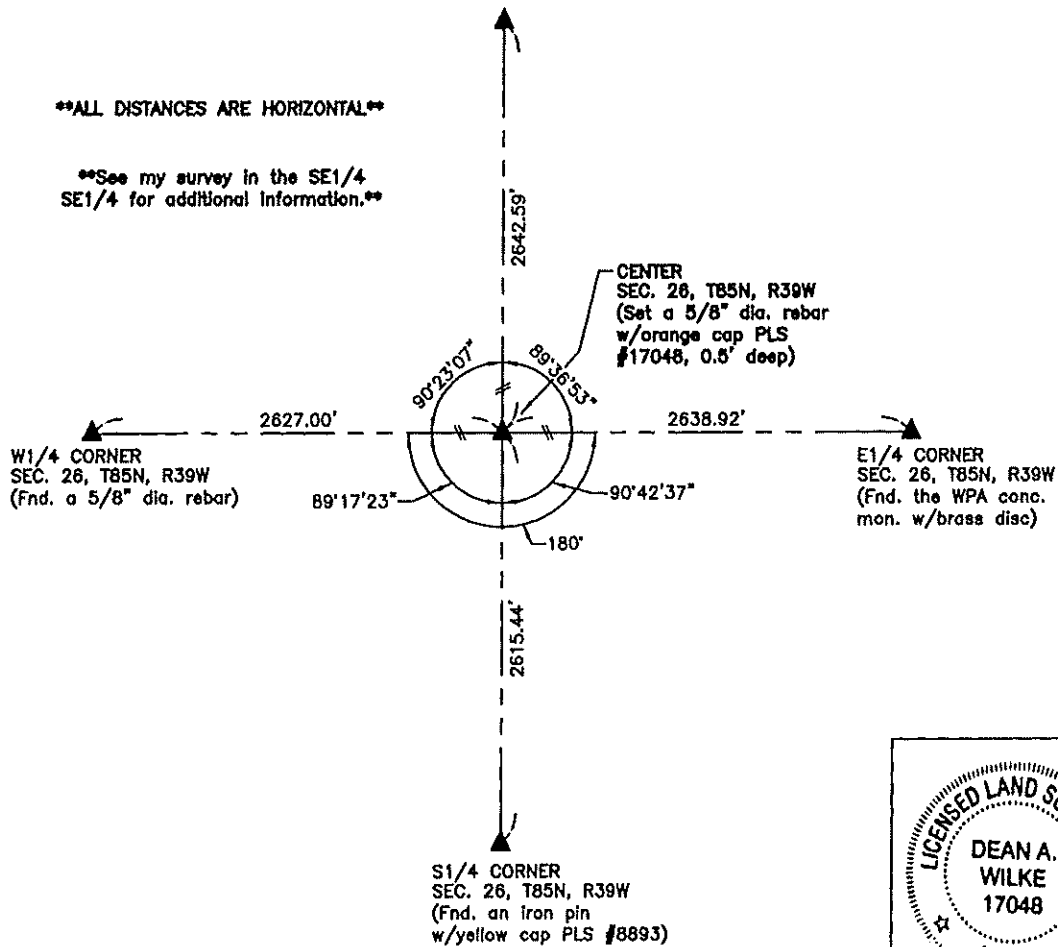
SECTION 26



N1/4 CORNER
 SEC. 26, T85N, R39W
 (Fnd. the WPA conc.
 mon. w/top broken off)

ALL DISTANCES ARE HORIZONTAL

**See my survey in the SE1/4
 SE1/4 for additional information.**



List Corners to be Indexed			
Corner	Section	Twp.	Range
CENTER	26	85N	39W

I hereby certify that this land surveying document was prepared and the related survey work was performed by me or under my direct personal supervision and that I am a duly Licensed Land Surveyor under the laws of the State of Iowa.

Dean A. Wilke 7/02/24
 Dean A. Wilke Day

License number 17048

My license renewal date is December 31, 2025

Pages or sheets covered by this seal: This page only