

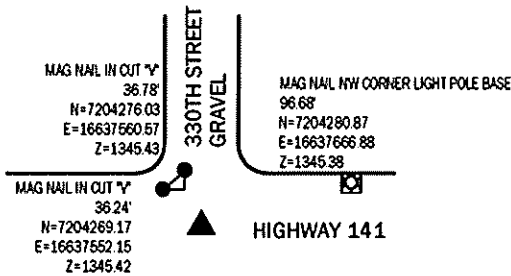
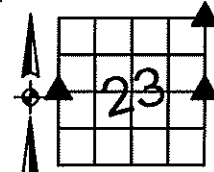
Sara Meseck, RECORDER
 Crawford County, Iowa
 Instr. Number: 2024-1429
 Recorded: 8/15/2024 at 9:02:05.0 AM
 Pages 1
 County Recording Fee: \$7.00
 Iowa E-Filing Fee: \$3.13
 Combined Fee: \$10.13
 Revenue Tax:

PREPARED BY AND RETURN TO: MIKE SCHULTE, SCHULTE SURVEYING, INC., 2003 390TH STREET, WESTSIDE, IA 51467 (712) 790-3489

UNITED STATES PUBLIC LAND SURVEY CORNER CERTIFICATE OF
 LAND SURVEY MONUMENTS SITUATED IN SECTION 23, TOWNSHIP 82 NORTH, RANGE 38 WEST, OF THE FIFTH
 PRINCIPAL MERIDIAN, CRAWFORD COUNTY, IOWA. PREVIOUSLY RECORDED IN SEE BELOW IN COUNTY
 RECORDER'S OFFICE. (book, page instrument number)

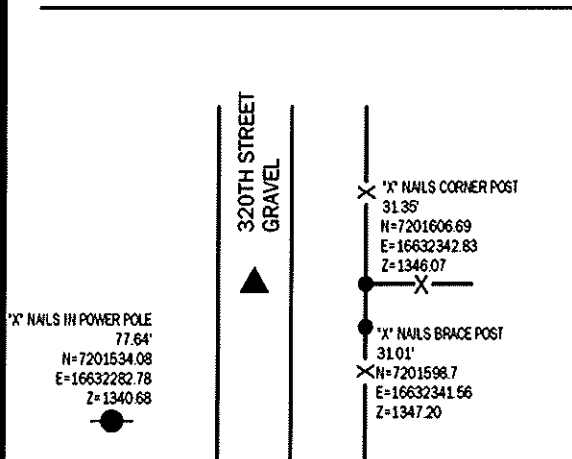
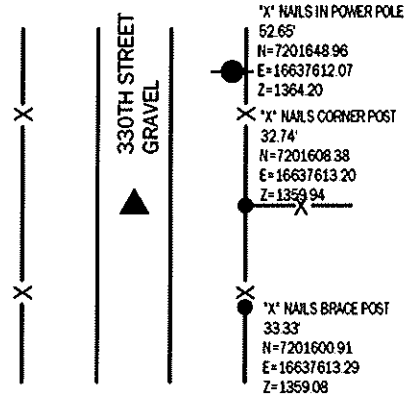
NE CORNER

FND 3" ALUMINUM IDOT DISK
 N=7204243.48 E=16637577.72 Z=1345.73
 USED CERTIFICATE RECORDED IN FEE BOOK 2004-3467 AND A METAL LOCATOR TO FIND A 3"
 ALUMINUM IDOT DISK THAT HAS BEEN GROUND DOWN. VERIFIED WITH SURROUNDING FIELD EVIDENCE.
 THIS CERTIFICATE IS BEING FILED TO UPDATE ALL REFERENCE TIES.



E1/4 CORNER

FND DAMAGED CONCRETE MONUMENT 3" DEEP
 SET MAG NAIL IN TOP
 N=7201606.83 E=16637580.49 Z=1351.61
 NO RECORD OF CORNER CERTIFICATE FOUND. USED PLAT OF
 SURVEY RECORDED IN FEE BOOK 2006-2336 TO FIND A LEANING,
 BROKEN CONCRETE MONUMENT 3" DEEP. VERIFIED WITH
 SURROUNDING FIELD EVIDENCE. SET MAG NAIL IN TOP.
 THIS CERTIFICATE IS BEING FILED DUE TO NONE OF RECORD.



W1/4 CORNER

FND CONCRETE MONUMENT 1' DEEP
 N=7201606.23 E=16632311.48 Z=1337.62
 USED CERTIFICATE RECORDED IN FEE BOOK 2004-3466 AND A
 METAL LOCATOR TO FIND A CONCRETE MONUMENT 1' DEEP.
 VERIFIED WITH 3 REMAINING TIES.
 THIS CERTIFICATE IS BEING FILED TO UPDATE THE REFERENCE TIES.

LIST CORNERS TO BE INDEXED

CORNER	SECTION	TWP	RANGE
NE CORNER	23	82	38
SE CORNER	14	82	38
SW CORNER	13	82	38
NW CORNER	24	82	38
W1/4 CORNER	23	82	38
E1/4 CORNER	22	82	38
E1/4 CORNER	23	82	38
W1/4 CORNER	24	82	38

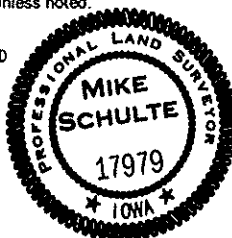
BASIS OF BEARING

IA RCS ZONE 6 - US SURVEY FEET
 IARFN DERIVED - NAD83(2011) EPOCH 2010.00

*All distances are measured horizontally unless noted.

I HEREBY CERTIFY THAT THIS LAND SURVEYING DOCUMENT WAS
 PREPARED BY ME OR UNDER MY DIRECT PERSONAL SUPERVISION AND
 THAT I AM A DULY LICENSED PROFESSIONAL LAND SURVEYOR UNDER
 THE LAWS OF THE STATE OF IOWA.

Mike Schulte
 MIKE SCHULTE
 LICENSE NUMBER 17979
 LICENSE RENEWAL DATE IS DECEMBER 31, 2025
 PAGES COVERED BY THIS SEAL: 1 OF 1



SCHULTE SURVEYING, INC.

DRAWN BY: SLG
 PROJ NUMBER: 24-038