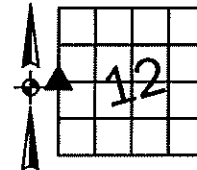


Sara Meseck, RECORDER
 Crawford County, Iowa
 Instr. Number: 2024-1183
 Recorded: 7/11/2024 at 9:16:39.0 AM
 Pages 1
 County Recording Fee: \$7.00
 Iowa E-Filing Fee: \$3.13
 Combined Fee: \$10.13
 Revenue Tax:

PREPARED BY AND RETURN TO: MIKE SCHULTE, SCHULTE SURVEYING, INC., 2003 390TH STREET, WESTSIDE, IA 51467 (712) 790-3489

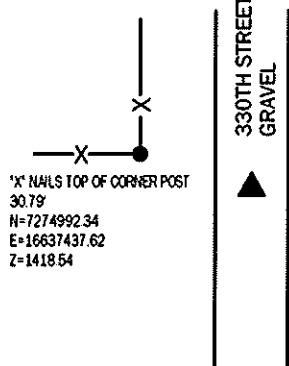
UNITED STATES PUBLIC LAND SURVEY CORNER CERTIFICATE OF
 LAND SURVEY MONUMENTS SITUATED IN SECTION 12, TOWNSHIP 84 NORTH, RANGE 38 WEST, OF THE FIFTH
 PRINCIPAL MERIDIAN, CRAWFORD COUNTY, IOWA. PREVIOUSLY RECORDED IN SEE BELOW IN COUNTY
(book, page instrument number)
 RECORDER'S OFFICE.



W1/4 CORNER

FND 5/8" REBAR OPC #14709 4" DEEP
 N=7274984.32 E=16637467.35 Z=1414.31

USED CERTIFICATE RECORDED IN INSTRUMENT #2013-2823 AND A METAL LOCATOR
 TO FIND A 5/8" REBAR OPC #14709 4" DEEP AS DESCRIBED ON CERTIFICATE. VERIFIED
 WITH 3 REMAINING TIES.
 THIS CERTIFICATE IS BEING FILED TO UPDATE THE REFERENCE TIES.



TOP CENTER TELEPHONE PED.
 74.05
 [T] N=7275048.29
 E=16637504.66
 Z=1414.50

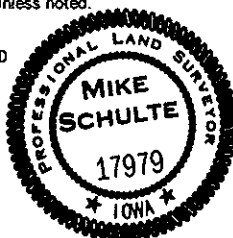
X NAILS TOP OF CORNER POST
 33.03
 N=7274984.00
 E=16637500.37
 Z=1413.38

[E] NW CORNER ELECTRIC BOX
 80.97
 N=7274988.93
 E=16637548.19
 Z=1410.43

*All distances are measured horizontally unless noted.

I HEREBY CERTIFY THAT THIS LAND SURVEYING DOCUMENT WAS
 PREPARED BY ME OR UNDER MY DIRECT PERSONAL SUPERVISION AND
 THAT I AM A DULY LICENSED PROFESSIONAL LAND SURVEYOR UNDER
 THE LAWS OF THE STATE OF IOWA.

Mike Schulte
 _____ DATE 2024/07/09
 MIKE SCHULTE
 LICENSE NUMBER 17979
 LICENSE RENEWAL DATE IS DECEMBER 31, 2025
 PAGES COVERED BY THIS SEAL: 1 OF 1



LIST CORNERS TO BE INDEXED

CORNER	SECTION	TWP	RANGE
W1/4 CORNER	12	84	38
E1/4 CORNER	11	84	38

BASIS OF BEARING
 IaRCS ZONE 6 - US SURVEY FEET
 IaRTN DERIVED - NAD83(2011) EPOCH 2010.00

SCHULTE SURVEYING, INC.

DRAWN BY: SLG
 PROJ NUMBER: 24-056