

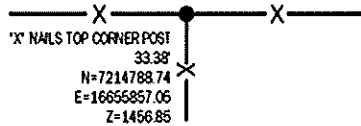
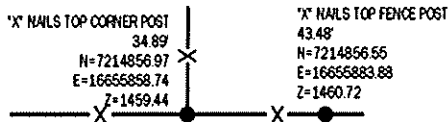
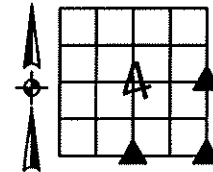
Sara Meseck, RECORDER
 Crawford County, Iowa
 Instr. Number: 2024-1264
 Recorded: 7/24/2024 at 8:41:57.0 AM
 Pages 1
 County Recording Fee: \$7.00
 Iowa E-Filing Fee: \$3.13
 Combined Fee: \$10.13
 Revenue Tax:

PREPARED BY AND RETURN TO: MIKE SCHULTE, SCHULTE SURVEYING, INC., 2003 390TH STREET, WESTSIDE, IA 51467 (712) 790-3489

UNITED STATES PUBLIC LAND SURVEY CORNER CERTIFICATE OF
 LAND SURVEY MONUMENTS SITUATED IN SECTION 04, TOWNSHIP 82 NORTH, RANGE 37 WEST, OF THE FIFTH
 PRINCIPAL MERIDIAN, CRAWFORD COUNTY, IOWA. PREVIOUSLY RECORDED IN SEE BELOW IN COUNTY
(book, page instrument number)
 RECORDER'S OFFICE.

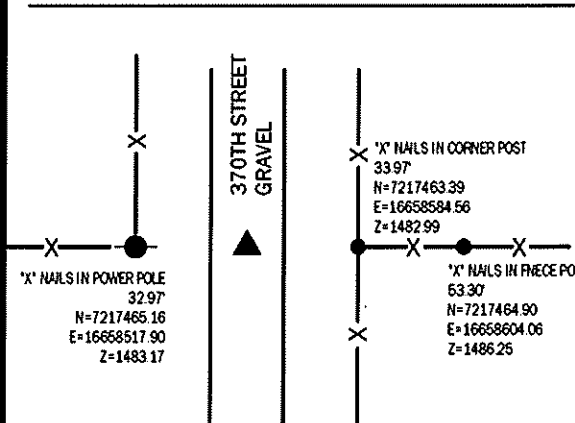
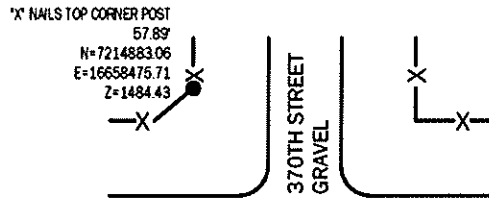
S1/4 CORNER

FND 5/8" REBAR YPC #6806 4" DEEP
 N=7214822.12 E=16655857.32 Z=1457.54
 USED CERTIFICATE RECORDED IN FEE BOOK 2004-2347 AND A METAL LOCATOR
 TO FIND A 5/8" REBAR YPC #6806 4" DEEP. VERIFIED WITH 3 REMAINING TIES.
 THIS CERTIFICATE IS BEING FILED TO UPDATE THE REFERENCE TIES.



SE CORNER

FND 5/8" REBAR YPC #8893 10" DEEP
 N=7214836.20 E=16658509.70 Z=1480.14
 USED CERTIFICATE RECORDED IN FEE BOOK 2011-2842 AND A
 METAL LOCATOR TO FIND A 5/8" REBAR YPC #8893 10" DEEP.
 VERIFIED WITH 3 REMAINING TIES.
 THIS CERTIFICATE IS BEING FILED TO UPDATE THE REFERENCE TIES.



E1/4 CORNER

FND 1/2" REBAR YPC #10318
 N=7217467.20 E=16658550.81 Z=1482.25
 USED CERTIFICATE RECORDED IN FEE BOOK 2007-0681 AND A
 METAL LOCATOR TO FIND A 1/2" REBAR YPC #10318. VERIFIED
 WITH 2 REMAINING TIES.
 THIS CERTIFICATE IS BEING FILED TO UPDATE REFERENCE TIES.

*All distances are measured horizontally unless noted.

I HEREBY CERTIFY THAT THIS LAND SURVEYING DOCUMENT WAS
 PREPARED BY ME OR UNDER MY DIRECT PERSONAL SUPERVISION AND
 THAT I AM A DULY LICENSED PROFESSIONAL LAND SURVEYOR UNDER
 THE LAWS OF THE STATE OF IOWA.

Mike Schulte
 MIKE SCHULTE
 LICENSE NUMBER 17979
 LICENSE RENEWAL DATE IS DECEMBER 31, 2025
 PAGES COVERED BY THIS SEAL: 1 OF 1



LIST CORNERS TO BE INDEXED

CORNER	SECTION	TWP	RANGE
E1/4 CORNER	4	82	37
W1/4 CORNER	3	82	37
S1/4 CORNER	4	82	37
N1/4 CORNER	9	82	37
SE CORNER	4	82	37
SW CORNER	3	82	37
NW CORNER	10	82	37
NE CORNER	9	82	37

BASIS OF BEARING

IARCS ZONE 6 - US SURVEY FEET
 IARTRN DERIVED - NAD83(2011) (EPOCH 2010.00)

SCHULTE SURVEYING, INC.

DRAWN BY: SLG
 PROJ NUMBER: 24-055