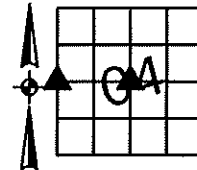


Sara Meseck, RECORDER
 Crawford County, Iowa
 Instr. Number: 2024-1265
 Recorded: 7/24/2024 at 8:41:57.0 AM
 Pages 1
 County Recording Fee: \$7.00
 Iowa E-Filing Fee: \$3.13
 Combined Fee: \$10.13
 Revenue Tax:

PREPARED BY AND RETURN TO: MIKE SCHULTE, SCHULTE SURVEYING, INC., 2003 390TH STREET, WESTSIDE, IA 51467 (712) 790-3489

UNITED STATES PUBLIC LAND SURVEY CORNER CERTIFICATE OF
 LAND SURVEY MONUMENTS SITUATED IN SECTION 04, TOWNSHIP 82 NORTH, RANGE 37 WEST, OF THE FIFTH
 PRINCIPAL MERIDIAN, CRAWFORD COUNTY, IOWA. PREVIOUSLY RECORDED IN SEE BELOW IN COUNTY
(book, page instrument number)
 RECORDER'S OFFICE.



W1/4 CORNER

FND 5/8" REBAR YPC #6806

N=7217444.07 E=16653273.91 Z=1462.60

USED CERTIFICATE RECORDED IN FEE BOOK 2004-2630 AND A METAL LOCATOR TO FIND A 5/8" REBAR YPC #6806. VERIFIED WITH 1 REMAINING TIE.

THIS CERTIFICATE IS BEING FILED TO UPDATE THE REFERENCE TIES.

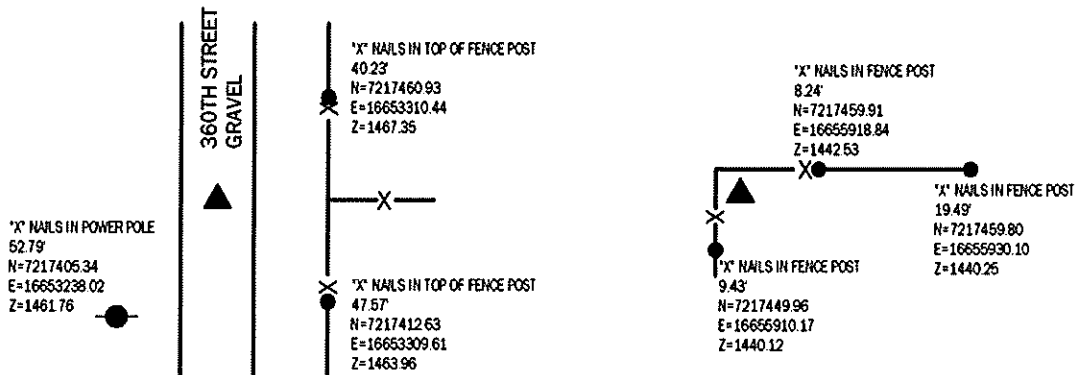
CENTER

SET 5/8" REBAR YPC #17979

N=7217459.38 E=16655910.62 Z=1439.32

NO RECORD OF CORNER FOUND. SEARCHED AREA FOR A STONE. FOUND NOTHING. USED SURROUNDING SECTION CORNERS AND VERIFIED CORNER POST LOCATION. SET 5/8" REBAR YPC #17979 SE OF CORNER POST.

THIS CERTIFICATE IS BEING FILED DUE TO NONE OF RECORD.



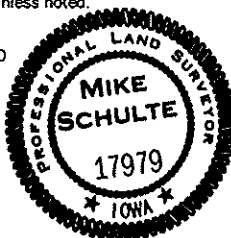
LIST CORNERS TO BE INDEXED

CORNER	SECTION	TWP	RANGE
CENTER	4	82	37
W1/4 CORNER	4	82	37
E1/4 CORNER	5	82	37

*All distances are measured horizontally unless noted.

I HEREBY CERTIFY THAT THIS LAND SURVEYING DOCUMENT WAS PREPARED BY ME OR UNDER MY DIRECT PERSONAL SUPERVISION AND THAT I AM A DULY LICENSED PROFESSIONAL LAND SURVEYOR UNDER THE LAWS OF THE STATE OF IOWA.

Mike Schulte
 MIKE SCHULTE
 LICENSE NUMBER 17979
 LICENSE RENEWAL DATE IS DECEMBER 31, 2025
 PAGES COVERED BY THIS SEAL: 1 OF 1



BASIS OF BEARING

IA RCS ZONE 6 - US SURVEY FEET
 IARTN DERIVED - NAD83(2011)(EPOCH 2010.00)

SCHULTE SURVEYING, INC.

DRAWN BY: SLG
 PROJ NUMBER: 24-055