

INDEX \_\_\_\_\_  
 SCAN \_\_\_\_\_  
 FOLLOW UP \_\_\_\_\_  
 PROOF \_\_\_\_\_

Instrument #: 2024-1716  
 09/19/2024 10:51:01 AM Total Pages: 1  
 PLC PLAT COR CERT  
 Recording Fee: \$7.00 Transfer Tax: \$0  
 Sara Heseck, Recorder, Crawford County Iowa



WILKE LAND SURVEYING INC. 401 1800th Street Panama, Iowa 51562 (712)579-0551

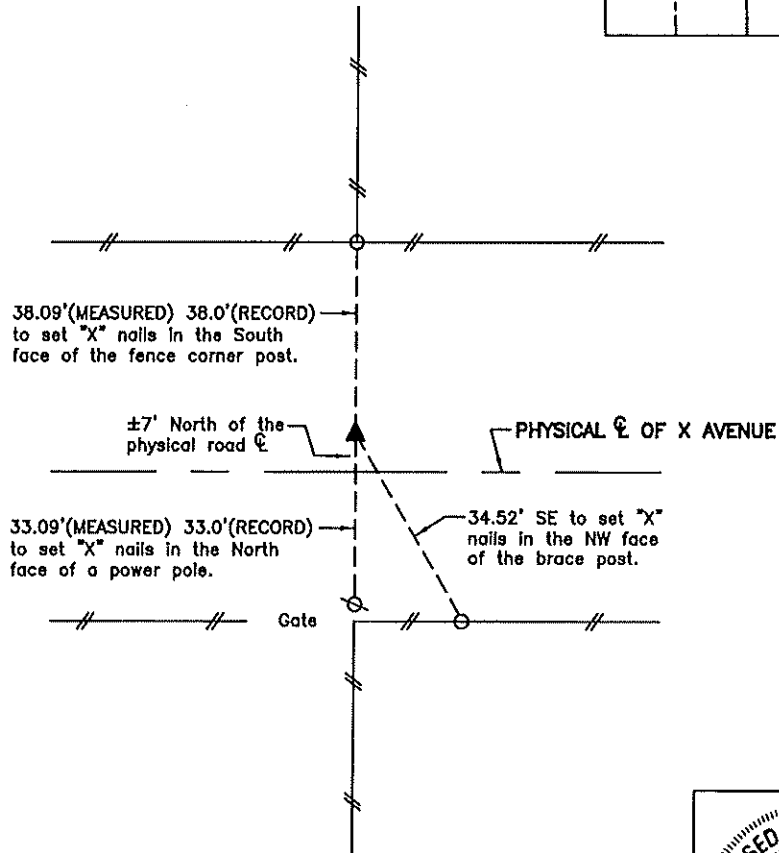
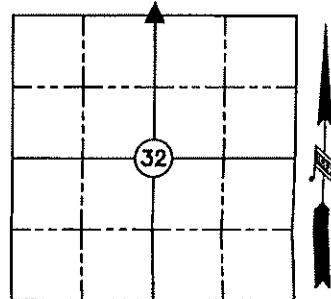
**UNITED STATES PUBLIC LAND SURVEY CORNER CERTIFICATE**

SECTION 32 TOWNSHIP 82N RANGE 37W COUNTY Crawford

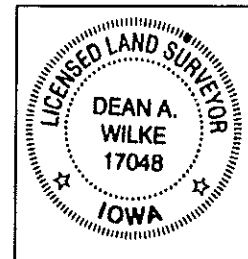
Reason for Certificate: Survey in the NW1/4 NE1/4

Monument Description and Remarks:

N1/4 CORNER - Dug 2'x3'x2.5' deep hole where the two remaining ties crossed and probed 4 foot deeper, but the record monument was not found. Reset a 5/8" diameter by 30" long rebar with an orange cap PLS #17048 (0.6' deep) using field book ties dated 6/27/2004 from the County Engineer's office. The reset monument is in line with the fences North & South, and is ±7' North of the physical centerline of X Avenue.



**\*\*ALL DISTANCES ARE HORIZONTAL\*\***



| List Corners to be Indexed |         |      |       |
|----------------------------|---------|------|-------|
| Corner                     | Section | Twp. | Range |
| N1/4 CORNER                | 32      | 82N  | 37W   |

I hereby certify that this land surveying document was prepared and the related survey work was performed by me or under my direct personal supervision and that I am a duly licensed Land Surveyor under the laws of the State of Iowa.

*Dean A. Wilke* 9/17/24  
 Dean A. Wilke Date

License number 17048

My license renewal date is December 31, 2025

Pages or sheets covered by this seal: This page only