

INDEX Km  
 SCAN \_\_\_\_\_  
 FOLLOW UP \_\_\_\_\_  
 PROOF \_\_\_\_\_

Instrument #: 2024-2336  
 12/03/2024 08:32:59 AM Total Pages: 1  
 PLC PLAT COR CERT  
 Recording Fee: \$7.00 Transfer Tax: \$0  
 Sara Neseck, Recorder, Crawford County Iowa



Prepared by: Mike N. Kern Address: 1900 MEDICAL ARTS AVE S, SUITE 100 SARTELL, MN Phone: 1-888-937-5150

UNITED STATES PUBLIC LAND SURVEY CORNER CERTIFICATE FOR

Land survey monuments situated in Section 19, Township 83 NORTH

Range 37 WEST, of the Fifth Principal Meridian, CRAWFORD County, Iowa.

Previously Recorded in \_\_\_\_\_ In County Recorder's Office.

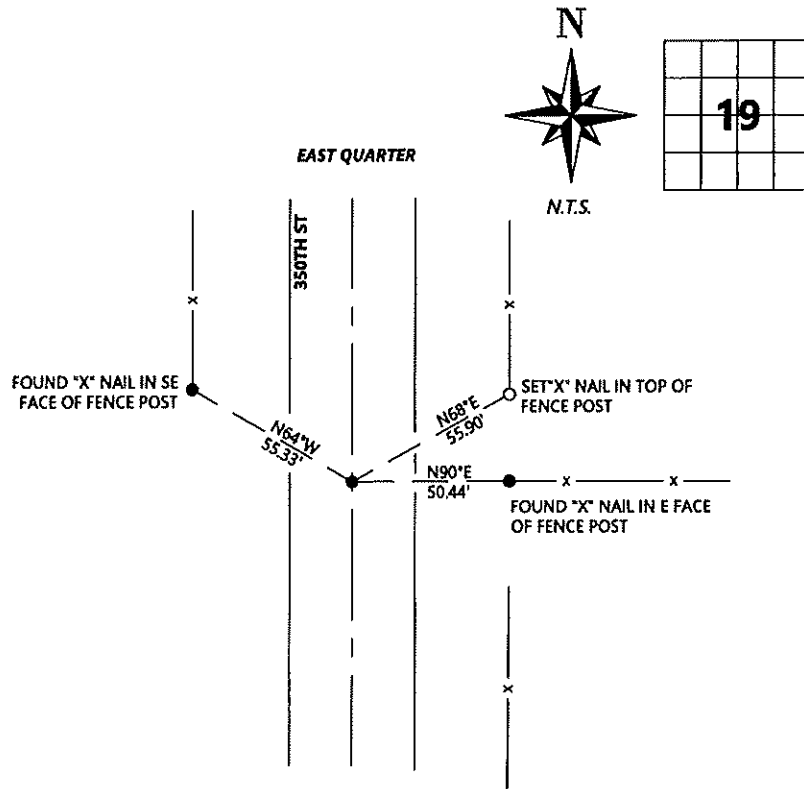
(Show reason for preparing this certificate, the evidence and detailed procedures used in establishing the corner positions and monumentation found or placed.)

MONUMENT DESCRIPTION AND REMARKS:

EQ - Westwood Professional Services searched the area and found a lead plug with an "X" cut in the center, flush with road surface. Found lead plug fits description and two found ties from 2018 corner by Mike Schulte. Accepting found lead plug as corner. Filing as there are no longer three valid ties of record.

PLAN - VIEW

(Show a minimum of three reference ties to durable physical objects, relevant monuments and physical conditions that will enable recovery of the corner.)



SEAL



I hereby certify that this land surveying document was prepared and the related survey work was performed by me or under my direct personal supervision and that I am a duly licensed Land Surveyor under the laws of the state of Iowa.

Signature [Signature] Date 11/6/2024

Typed/Printed Name: Michael N. Kern

License Number: 25609

My license renewal date is December 31, 2024

Pages or sheets covered by this seal: SHEET ONE OF ONE

Corners to be Indexed

Corners	Section	Twp.	Range
EQ	19	83	37