

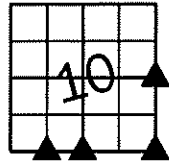
Sara Meseck, RECORDER
 Crawford County, Iowa
 Instr. Number: 2024-0951
 Recorded: 6/4/2024 at 3:25:19.0 PM
 Pages 1
 County Recording Fee: \$7.00
 Iowa E-Filing Fee: \$3.13
 Combined Fee: \$10.13
 Revenue Tax:

PREPARED BY AND RETURN TO: MIKE SCHULTE, SCHULTE SURVEYING, INC., 2003 390TH STREET, WESTSIDE, IA 51467 (712) 790-3489

UNITED STATES PUBLIC LAND SURVEY CORNER CERTIFICATE OF
 LAND SURVEY MONUMENTS SITUATED IN SECTION 10, TOWNSHIP 83 NORTH, RANGE 37 WEST, OF THE FIFTH
 PRINCIPAL MERIDIAN, CRAWFORD COUNTY, IOWA. PREVIOUSLY RECORDED IN SEE BELOW IN COUNTY
(book, page instrument number)
 RECORDER'S OFFICE.

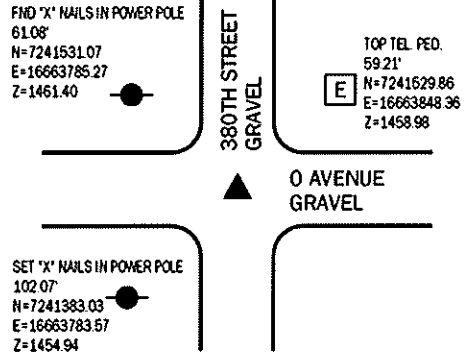
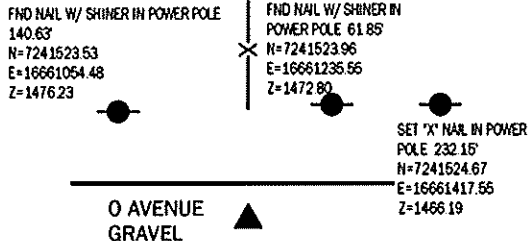
S1/4 CORNER

FND CONCRETE MONUMENT AT SURFACE
 N=7241483.06 E=16661189.16 Z=1472.95
 USED CERTIFICATE RECORDED IN FEE BOOK 2006-2402 TO FIND A
 CONCRETE MONUMENT AT THE SURFACE. VERIFIED WITH 2
 REMAINING TIES.
 THIS CERTIFICATE IS BEING FILED TO UPDATE THE REFERENCE TIES.



SE CORNER

FND 1/2" REBAR 4" DEEP
 N=7241479.25 E=16663817.62 Z=1461.21
 USED CERTIFICATE RECORDED IN INSTRUMENT #97-2439
 AND A METAL LOCATOR TO FIND A 1/2" REBAR 4" DEEP.
 VERIFIED WITH 1 REMAINING TIE.
 THIS CERTIFICATE IS BEING FILED TO UPDATE THE
 REFERENCE TIES.

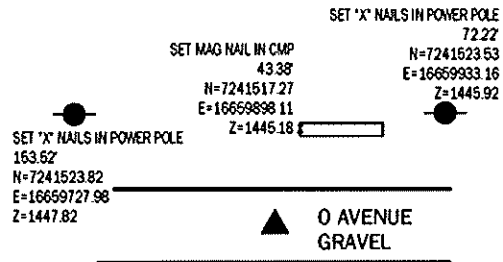
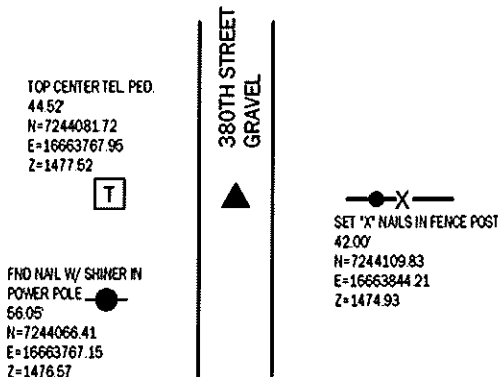


E1/4 CORNER

FND 5/8" REBAR 7" DEEP
 N=7244110.14 E=16663802.21 Z=1475.75
 USED CERTIFICATE RECORDED IN FEE BOOK 2006-2402 AND A METAL
 LOCATOR TO FIND A 5/8" REBAR 7" DEEP. VERIFIED WITH 1 REMAINING TIE.
 THIS CERTIFICATE IS BEING FILED TO UPDATE THE REFERENCE TIES.

SW CORNER SE1/4 SW1/4

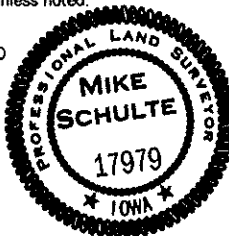
SET 5/8" REBAR YPC #17979
 N=7241480.40 E=16659875.24
 NO RECORD OF CORNER FOUND. SEARCHED AREA, FOUND
 NOTHING. SET 5/8" REBAR YPC #17979 BY SINGLE PROPORTION.
 THIS CERTIFICATE IS BEING FILED DUE TO NONE OF RECORD.



*All distances are measured horizontally unless noted.

I HEREBY CERTIFY THAT THIS LAND SURVEYING DOCUMENT WAS
 PREPARED BY ME OR UNDER MY DIRECT PERSONAL SUPERVISION AND
 THAT I AM A DULY LICENSED PROFESSIONAL LAND SURVEYOR UNDER
 THE LAWS OF THE STATE OF IOWA.

Mike Schulte
 MIKE SCHULTE
 LICENSE NUMBER: 17979
 LICENSE RENEWAL DATE IS DECEMBER 31, 2025
 PAGES COVERED BY THIS SEAL: 1 OF 1



LIST CORNERS TO BE INDEXED

CORNER	SECTION	TWP	RANGE
S1/4 CORNER	10	83	37
N1/4 CORNER	15	83	37
SE CORNER	10	83	37
NE CORNER	15	83	37
NW CORNER	14	83	37
SW CORNER	11	83	37
E1/4 CORNER	10	83	37
W1/4 CORNER	11	83	37
SW CORNER SE1/4 SW1/4	10	83	37
NW CORNER NE1/4 NW1/4	15	83	37

BASIS OF BEARING

1a) R/S ZONE 6 - US SURVEY FEET
 1a) RTH DERIVED - NAD83(2011)EPOCH 2010.00)