

INDEX KM  
 SCAN \_\_\_\_\_  
 FOLLOW UP \_\_\_\_\_  
 PROOF \_\_\_\_\_

Instrument #: 2024-2332  
 12/03/2024 08:32:59 AM Total Pages: 1  
 PLC PLAT COR CERT  
 Recording Fee: \$7.00 Transfer Tax: \$0  
 Sara Reseck, Recorder, Crawford County Iowa



Prepared by: Mike N. Kern Address: 1900 MEDICAL ARTS AVE S, SUITE 100 SARTELL, MN Phone: 1-888-937-5150

UNITED STATES PUBLIC LAND SURVEY CORNER CERTIFICATE FOR

Land survey monuments situated in Section 12, Township R3 NORTH  
 Range 37 WEST, of the Fifth Principal Meridian, CRAWFORD County, Iowa.

Previously Recorded in \_\_\_\_\_ in County Recorder's Office.

(Show reason for preparing this certificate, the evidence and detailed procedures used in establishing the corner positions and monumentation found or placed.)

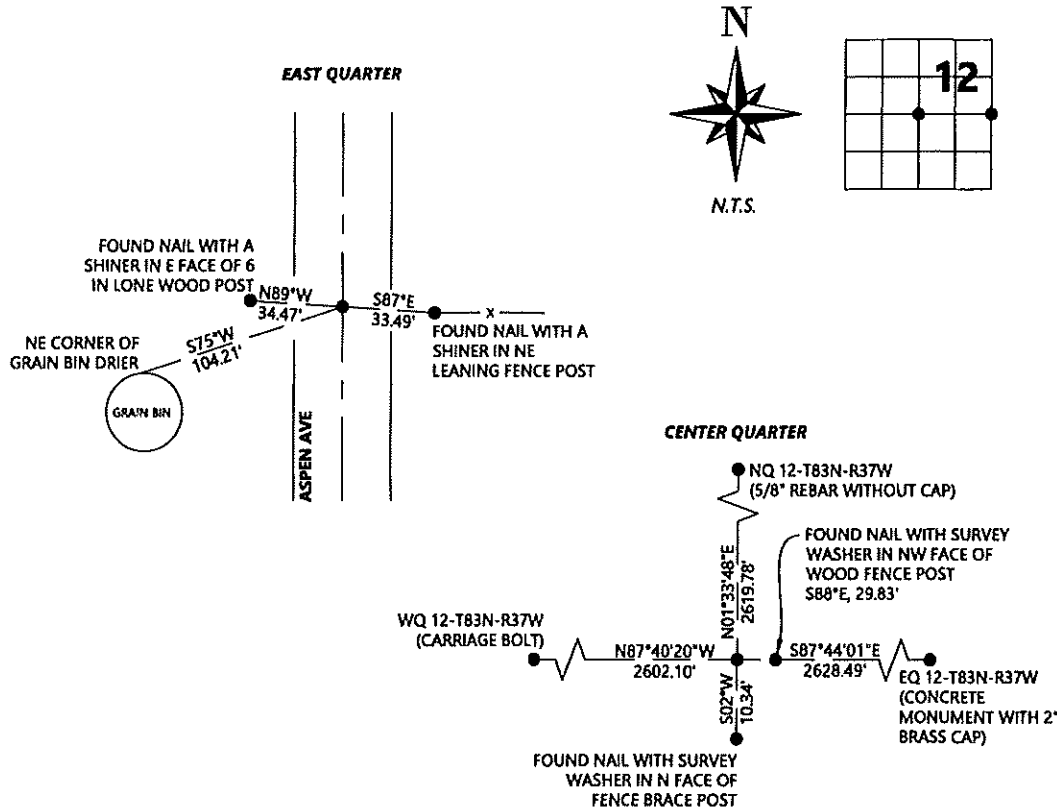
MONUMENT DESCRIPTION AND REMARKS:

**EQ** - Westwood Professional Services searched the area and found a concrete monument with a 2" brass cap, down 0.3 ft. Monument agrees well with two found ties from 2006 Geier record. Accepting as corner position. Position agrees well with local occupation. Filing due to there no longer being three valid ties of record.

**CQ** - Westwood Professional Services searched the area and found a 5/8" rebar with a cap marked "LS6806" at the corner post of an old fence running South and East. Three ties of unknown record were found. Westwood was unable to find a corner record filed by Hillhouse (doc. 2013-0853) mentioned in 2013 Hillhouse survey of the area. Accepting as corner position. Filing as there is no certificate on file for this corner.

PLAN - VIEW

(Show a minimum of three reference ties to durable physical objects, relevant monuments and physical conditions that will enable recovery of the corner.)



SEAL



I hereby certify that this land surveying document was prepared and the related survey work was performed by me or under my direct personal supervision and that I am a duly licensed Land Surveyor under the laws of the state of Iowa.

Signature [Signature] Date 11/6/2024

Typed/Printed Name: Michael N. Kern

License Number: 25609

My license renewal date is December 31, 2024

Pages or sheets covered by this seal: SHEET ONE OF ONE

Corners to be Indexed

Corners	Section	Twp.	Range
EQ	12	83	37
CQ	12	83	37