

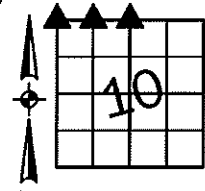
Sara Maseck, RECORDER
 Crawford County, Iowa
 Instr. Number: 2024-0949
 Recorded: 6/4/2024 at 3:25:19.0 PM
 Pages 1
 County Recording Fee: \$7.00
 Iowa E-Filing Fee: \$3.13
 Combined Fee: \$10.13
 Revenue Tax:

PREPARED BY AND RETURN TO: MIKE SCHULTE, SCHULTE SURVEYING, INC., 2003 390TH STREET, WESTSIDE, IA 51467 (712) 790-3489

UNITED STATES PUBLIC LAND SURVEY CORNER CERTIFICATE OF
 LAND SURVEY MONUMENTS SITUATED IN SECTION 10, TOWNSHIP 83 NORTH, RANGE 37 WEST, OF THE FIFTH
 PRINCIPAL MERIDIAN, CRAWFORD COUNTY, IOWA. PREVIOUSLY RECORDED IN SEE BELOW IN COUNTY
(book, page instrument number)
 RECORDER'S OFFICE.

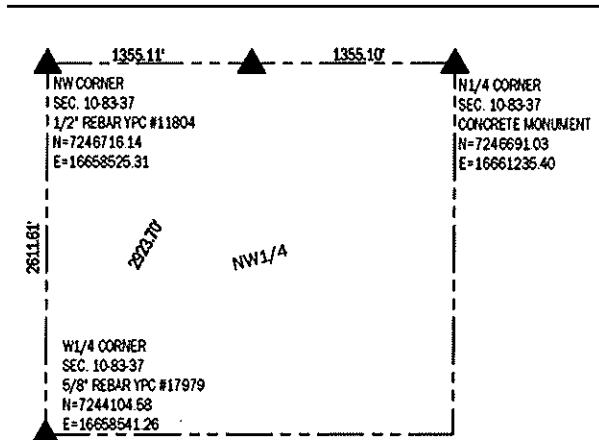
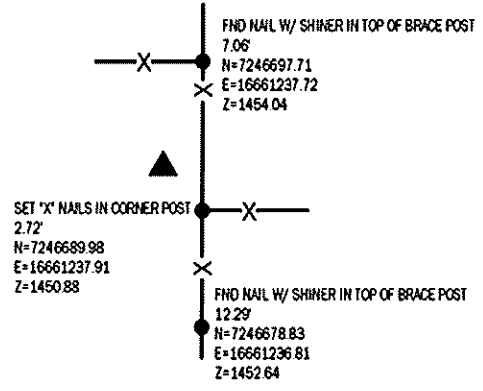
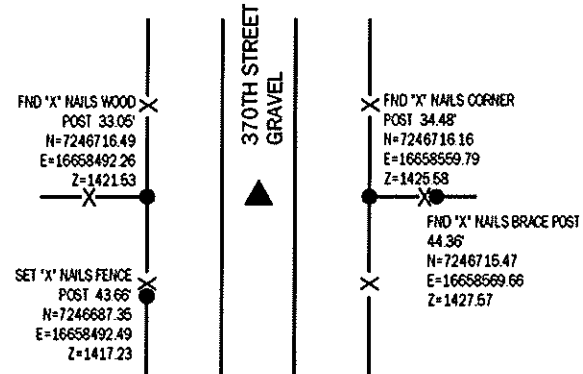
NW CORNER

FND 1/2" REBAR YPC #11804
 N=7246716.14 E=16658525.31
 USED CERTIFICATE RECORDED IN FEE BOOK 2006-2400 AND A
 METAL LOCATOR TO FIND A 1/2" REBAR YPC #11804. VERIFIED WITH
 3 REMAINING TIES.
 THIS CERTIFICATE IS BEING FILED TO UPDATE THE REFERENCE TIES.



N1/4 CORNER

FND CONCRETE MONUMENT
 N=7246691.03 E=16661235.40
 USED CERTIFICATE RECORDED IN FEE BOOK 2006-2403 TO FIND A
 CONCRETE MONUMENT +/- 1.5' WEST OF FENCE. VERIFIED WITH 2
 REMAINING TIES.
 THIS CERTIFICATE IS BEING FILED TO UPDATE THE REFERENCE TIES.



NW CORNER NE1/4 NW1/4

SET 5/8" REBAR YPC #17979
 N=7246703.59 E=16659880.36
 NO RECORD OF CORNER FOUND. SEARCHED AREA FOUND
 NOTHING. CALCULATED LOCATION AT SPLIT BETWEEN NORTH
 1/4 CORNER AND NORTHWEST CORNER AND SET A 5/8"
 REBAR YPC #17979.
 THIS CERTIFICATE IS BEING FILED DUE NO NONE OF RECORD.

LIST CORNERS TO BE INDEXED

CORNER	SECTION	TWP	RANGE
NW CORNER	10	83	37
NE CORNER	9	83	37
SE CORNER	4	83	37
SW CORNER	3	83	37
N1/4 CORNER	10	83	37
S1/4 CORNER	3	83	37
NW CORNER NE1/4 NW1/4	10	83	37
SW CORNER SE1/4 SW1/4	3	83	37

BASIS OF BEARING

IaRCS ZONE 6 - US SURVEY FEET
 IaRTN DERIVED - NAD83(2011)EPOCH 2010.00

*All distances are measured horizontally unless noted.

I HEREBY CERTIFY THAT THIS LAND SURVEYING DOCUMENT WAS
 PREPARED BY ME OR UNDER MY DIRECT PERSONAL SUPERVISION AND
 THAT I AM A DULY LICENSED PROFESSIONAL LAND SURVEYOR UNDER
 THE LAWS OF THE STATE OF IOWA.

Mike Schulte
 MIKE SCHULTE
 LICENSE NUMBER 17979
 LICENSE RENEWAL DATE IS DECEMBER 31, 2025
 PAGES COVERED BY THIS SEAL: 1 OF 1

