

Sara Meseck, RECORDER
 Crawford County, Iowa
 Instr. Number: 2024-0950
 Recorded: 6/4/2024 at 3:25:19.0 PM
 Pages 1
 County Recording Fee: \$7.00
 Iowa E-Filing Fee: \$3.13
 Combined Fee: \$10.13
 Revenue Tax:

PREPARED BY AND RETURN TO: MIKE SCHULTE, SCHULTE SURVEYING, INC., 2003 390TH STREET, WESTSIDE, IA 51467 (712) 790-3489

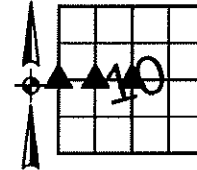
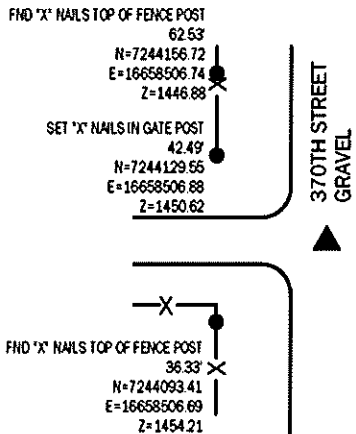
UNITED STATES PUBLIC LAND SURVEY CORNER CERTIFICATE OF
 LAND SURVEY MONUMENTS SITUATED IN SECTION 10, TOWNSHIP 83 NORTH, RANGE 37 WEST, OF THE FIFTH
 PRINCIPAL MERIDIAN, CRAWFORD COUNTY, IOWA. PREVIOUSLY RECORDED IN SEE BELOW IN COUNTY
(book, page instrument number)
 RECORDER'S OFFICE.

W1/4 CORNER

SET 5/8" REBAR YPC #17979

N=7244104.58 E=16658541.26

USED CERTIFICATE RECORDED IN FEE BOOK 2006-2400 AND A
 METAL LOCATOR TO SEARCH AREA. FOUND NOTHING. SET 5/8"
 REBAR YPC #17979 BY USING 2 REMAINING TIES.
 THIS CERTIFICATE IS BEING FILED TO UPDATE THE MONUMENT.

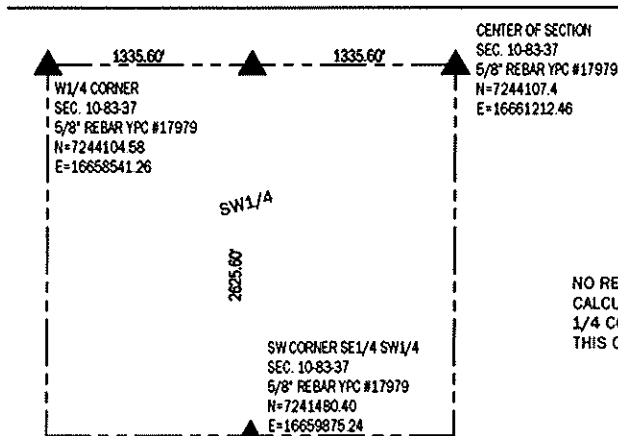
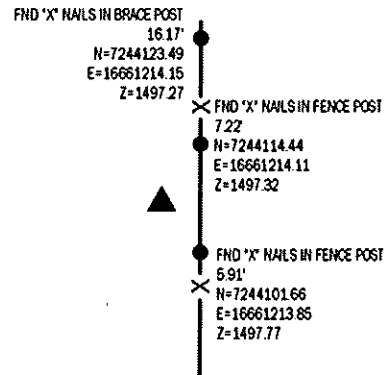


CENTER OF SECTION

SET 5/8" REBAR YPC #17979

N=7244107.41 E=16661212.46 Z=1495.55

USED CERTIFICATE RECORDED IN FEE BOOK 2009-0044 AND A METAL
 LOCATOR TO FIND A BENT PIN. SET 5/8" REBAR YPC #17979 +/- 2'
 WEST OF FENCE USING 3 REMAINING REFERENCE TIES.
 THIS CERTIFICATE IS BEING FILED TO UPDATE THE CERTIFICATE.



NW CORNER NE1/4 SW1/4
 CALCULATED

N=7244106.00 E=16659876.86

NO RECORD OF CORNER FOUND: SEARCHED AREA FOUND NOTHING.
 CALCULATED LOCATION AT SPLIT BETWEEN CENTER OF SECTION AND WEST
 1/4 CORNER. DID NOT SET MONUMENT BY REQUEST OF LAND OWNER.
 THIS CERTIFICATE IS BEING FILED DUE NO NONE OF RECORD.

LIST CORNERS TO BE INDEXED

CORNER	SECTION	TWP	RANGE
W1/4 CORNER	10	83	37
E1/4 CORNER	9	83	37
NW CORNER NE1/4 SW1/4	10	83	37
CENTER	10	83	37

*All distances are measured horizontally unless noted.

I HEREBY CERTIFY THAT THIS LAND SURVEYING DOCUMENT WAS
 PREPARED BY ME OR UNDER MY DIRECT PERSONAL SUPERVISION AND
 THAT I AM A DULY LICENSED PROFESSIONAL LAND SURVEYOR UNDER
 THE LAWS OF THE STATE OF IOWA.

Mike Schulte
 MIKE SCHULTE
 LICENSE NUMBER: 17979
 LICENSE RENEWAL DATE IS DECEMBER 31, 2025
 PAGES COVERED BY THIS SEAL: 1 OF 1



BASIS OF BEARING

1aRCS ZONE 6 - US SURVEY FEET
 1aRTH DERIVED - NAD83(2011)(EPOCH 2010.00)

SCHULTE SURVEYING, INC.

DRAWN BY: MLS/SLG
 PROJ NUMBER: 24-011