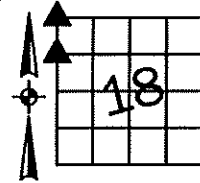


Sara Meseck, RECORDER  
 Crawford County, Iowa  
 Instr. Number: 2024-2068  
 Recorded: 11/6/2024 at 8:27:23.0 AM  
 Pages 1  
 County Recording Fee: \$7.00  
 Iowa E-Filing Fee: \$3.13  
 Combined Fee: \$10.13  
 Revenue Tax:

PREPARED BY AND RETURN TO: MIKE SCHULTE, SCHULTE SURVEYING, INC., 2003 390TH STREET, WESTSIDE, IA 51467 (712) 790-3489

**UNITED STATES PUBLIC LAND SURVEY CORNER CERTIFICATE OF**  
 LAND SURVEY MONUMENTS SITUATED IN SECTION 18, TOWNSHIP 84 NORTH, RANGE 39 WEST, OF THE FIFTH  
 PRINCIPAL MERIDIAN, CRAWFORD COUNTY, IOWA. PREVIOUSLY RECORDED IN SEE BELOW IN COUNTY  
(book, page instrument number)  
 RECORDER'S OFFICE.

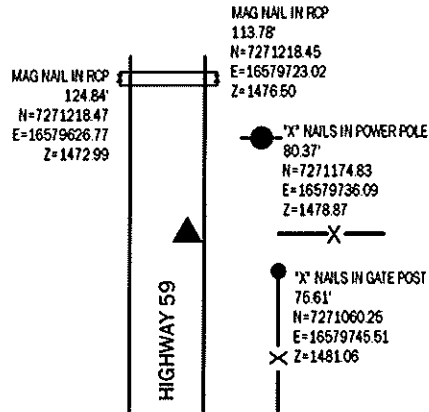
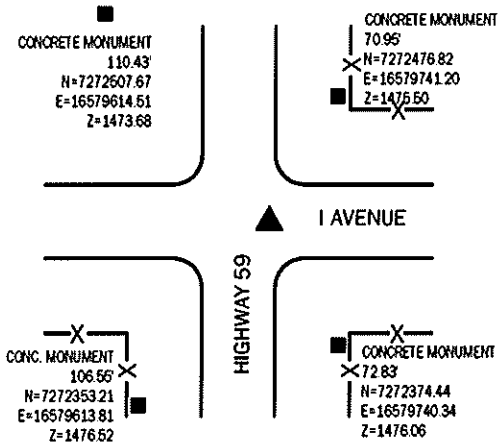


**NW CORNER**  
 SET MAG NAIL

N=7272427.37 E=16579690.32 Z=1476.88  
 USED CERTIFICATE RECORDED IN FEE BOOK 2013-1641 TO SEARCH  
 AREA. DID NOT FIND MONUMENT. PAYMENT HAS BEEN RECENTLY  
 OVERLAID. FOUND 4 REFERENCE TIES AND RESET A MAG NAIL AS  
 SECTION CORNER.  
 THIS CERTIFICATE IS BEING FILED DUE TO A NEW MONUMENT.

**SW CORNER NW1/4 FRL. NW1/4**  
 SET MAG NAIL

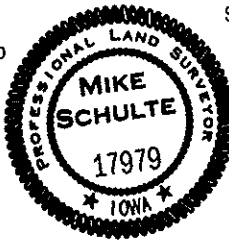
N=7271110.00 E=16579688.58  
 SEARCHED AREA. FOUND NOTHING. SET MAG NAIL ON-LINE  
 WITH NW CORNER AND W1/4 CORNER AND ON-LINE WITH SE  
 CORNER NE1/4 FRL. NW1/4 AND R.O.W. RAIL.  
 THIS CERTIFICATE IS BEING FILED DUE TO NONE OF RECORD.



\*All distances are measured horizontally unless noted.

I HEREBY CERTIFY THAT THIS LAND SURVEYING DOCUMENT WAS  
 PREPARED BY ME OR UNDER MY DIRECT PERSONAL SUPERVISION AND  
 THAT I AM A DULY LICENSED PROFESSIONAL LAND SURVEYOR UNDER  
 THE LAWS OF THE STATE OF IOWA.

*Mike Schulte*  
 MIKE SCHULTE  
 LICENSE NUMBER 17979  
 LICENSE RENEWAL DATE IS DECEMBER 31, 2025  
 PAGES COVERED BY THIS SEAL: 1 OF 1



**LIST CORNERS TO BE INDEXED**

CORNER	SECTION	TWP	RANGE
SW CORNER NW1/4 FRL. NW1/4	18	84	39
SE CORNER NE1/4 NE1/4	13	84	40
NW CORNER	18	84	39
NE CORNER	13	84	40
SE CORNER	12	84	40
SW CORNER	7	84	39

**BASIS OF BEARING**

1aRCS ZONE 6 - US SURVEY FEET  
 1aRTH DERIVED - NAD83(2011)(EPOCH 2010.00)

**SCHULTE SURVEYING, INC.**

DRAWN BY: SLG  
 PROJ NUMBER: 24-082