

INDEX XM
 SCAN _____
 FOLLOW UP _____
 PRGUF _____

Instrument #: 2024-2368
 12/03/2024 08:32:59 AM Total Pages: 1
 PLC PLAT COR CERT
 Recording Fee: \$7.00 Transfer Tax: \$0
 Sara Meseck, Recorder, Crawford County Iowa



Prepared by: Mike N. Kern Address: 1900 MEDICAL ARTS AVE. S. SUITE 100 SARTELL MN Phone: 1-888-937-5150

UNITED STATES PUBLIC LAND SURVEY CORNER CERTIFICATE FOR

Land survey monuments situated in Section 36, Township 83 NORTH
39 WEST, of the Fifth Principal Meridian, CRAWFORD County, Iowa.

Previously Recorded in _____ in County Recorder's Office.

(Show reason for preparing this certificate, the evidence and detailed procedures used in establishing the corner positions and monumentation found or placed.)

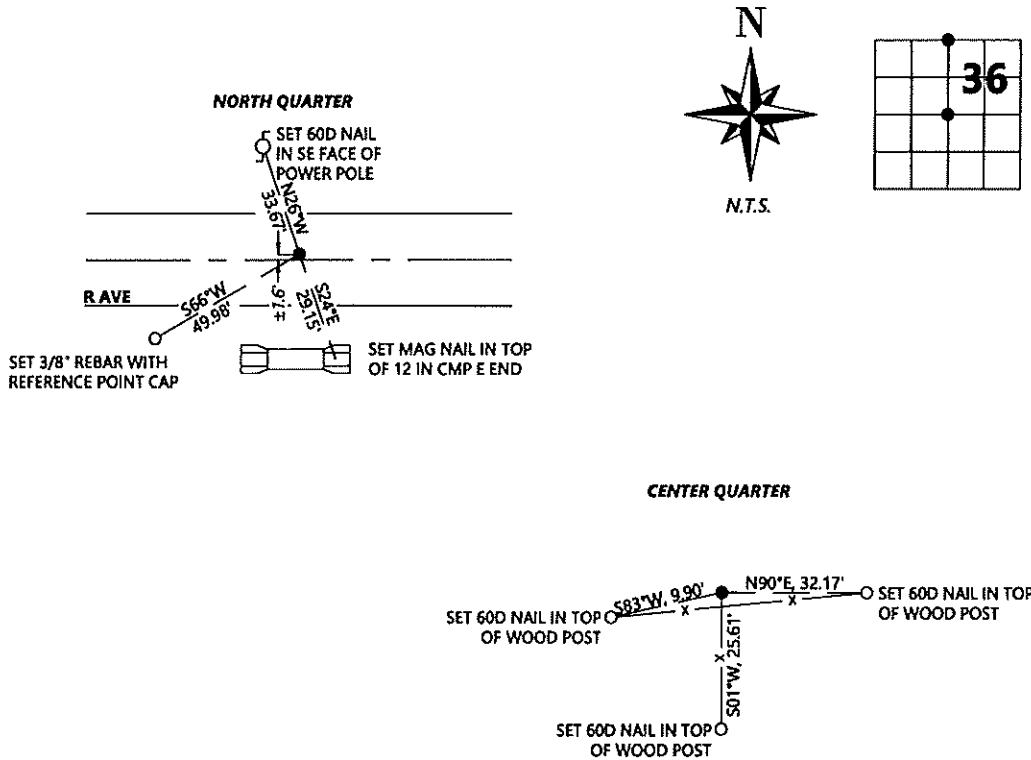
MONUMENT DESCRIPTION AND REMARKS:

NQ - Westwood Professional Services searched the area and found a 1" rebar, down 0.5 ft. Distance to adjoining corners agrees with 1985 Dueland survey, however monument type differs. Monument agrees with monument called for in 2011 Wilke survey. Accepting as the corner position. Filing due to no previously recorded certificate.

CQ - Westwood Professional Services searched the area and found a 5/8" rebar with a cap marked "LS17048" flush with the surface, at the intersection of a fence running E/W/S. Distances to adjoining corners agree well with 2011 Wilke record and survey. Accepting as the corner position. Filing to update with local tie distances.

PLAN - VIEW

(Show a minimum of three reference ties to durable physical objects, relevant monuments and physical conditions that will enable recovery of the corner.)



I hereby certify that this land surveying document was prepared and the related survey work was performed by me or under my direct personal supervision and that I am a duly licensed Land Surveyor under the laws of the state of Iowa.

Signature: Michael N. Kern Date: 11/6/2024
 Typed/Printed Name: Michael N. Kern
 License Number: 25609
 My license renewal date is December 31, 2024
 Pages or sheets covered by this seal: SHEET ONE OF ONE

Corners to be Indexed			
Corners	Section	Twp.	Range
NQ	36	83	39
CQ	36	83	39