

Instrument #: 2024-2366
 12/03/2024 08:32:59 AM Total Pages: 1
 PLC PLAT COR CERT
 Recording Fee: \$7.00 Transfer Tax: \$0
 Sara Meseck, Recorder, Crawford County Iowa



Prepared by: Mike N. Kern Address: 1900 MEDICAL ARTS AVE S. SUITE 100 SARTELL, MN Phone: 1-888-937-5150

UNITED STATES PUBLIC LAND SURVEY CORNER CERTIFICATE FOR

Land survey monuments situated in Section 32, Township 83 NORTH
 Range 39 WEST, of the Fifth Principal Meridian, CRAWFORD County, Iowa.
 Previously Recorded In _____ In County Recorder's Office.

(Show reason for preparing this certificate, the evidence and detailed procedures used in establishing the corner positions and monumentation found or placed.)

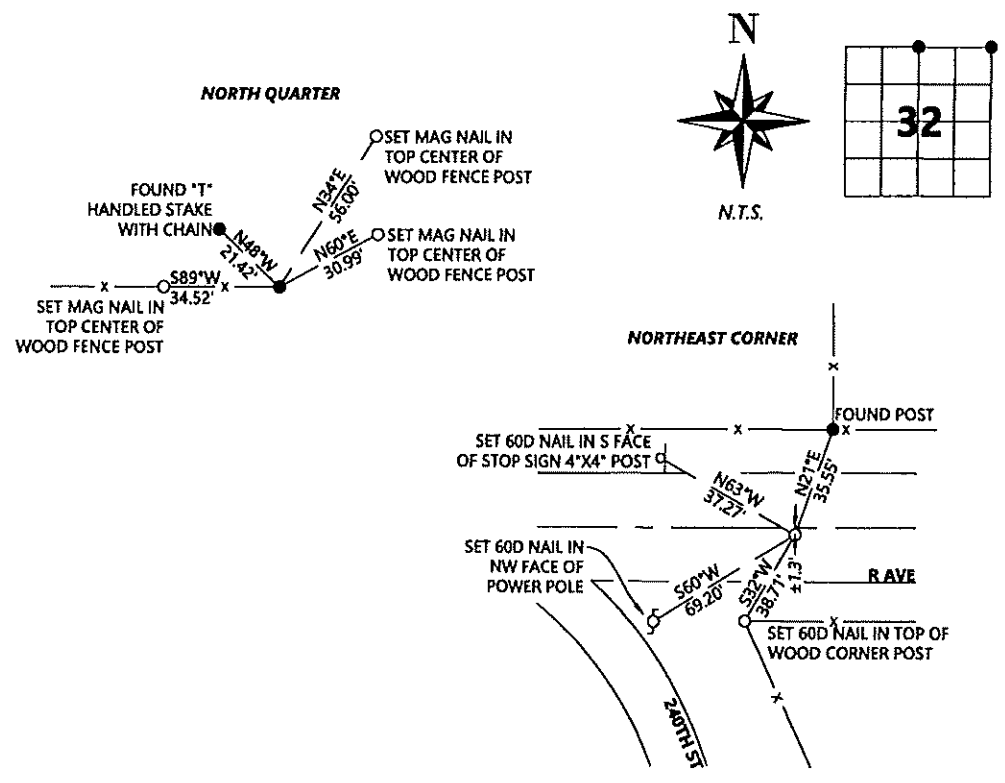
MONUMENT DESCRIPTION AND REMARKS:

NQ - Westwood Professional Services searched the area and found a 4"x4" concrete monument, down 0.1 ft. Monument is on the East side of E/W fence line. No ties were recovered from old engineers record. Distances to adjoining corners agree well with 2007 Crawford survey. Accepting as the corner location. Filing as there is no certificate on file for this corner.

NE - Westwood Professional Services excavated a ±9.5 ft deep hole with Crawford County Engineer, however no monumentation was found. Computed the corner position using an extension of the south line from the Denison substation deeds projected out at record distance per deeds recorded as Book 64, Page 251 and Book 70, Page 596. Position agrees well with E/W road and agrees well with extension of road to the South. Holding this position as the best available evidence of the corner location and set a 1/2" rebar with a cap marked "LS25609." Filing as there is no certificate on file for this corner.

PLAN - VIEW

(Show a minimum of three reference ties to durable physical objects, relevant monuments and physical conditions that will enable recovery of the corner.)



I hereby certify that this land surveying document was prepared and the related survey work was performed by me or under my direct personal supervision and that I am a duly licensed Land Surveyor under the laws of the state of Iowa.

Signature: Michael N. Kern Date: 11/6/2024
 Typed/Printed Name: Michael N. Kern
 License Number: 25609
 My license renewal date is December 31, 2024
 Pages or sheets covered by this seal: SHEET ONE OF ONE

Corners to be Indexed

Corners	Section	Twp.	Range
NQ	32	83	39
NE	32	83	39