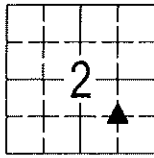


LOCATION MAP CORNER INDEX:



S2-T83N-R39W

1. SW Cor. NE1/4 SE1/4

Sara Meseck, RECORDER
 Crawford County, Iowa
 Instr. Number: 2024-0888
 Recorded: 5/29/2024 at 9:58:37.0 AM
 Pages 1
 County Recording Fee: \$7.00
 Iowa E-Filing Fee: \$3.13
 Combined Fee: \$10.13
 Revenue Tax:

This document prepared by : Beck Engineering, Inc. - Brad M. Beck, P.E., P.L.S. #17765
 110 East Indian Street, Cherokee, Iowa 51012 (info@beck-engineering.net) (712) 225-9025

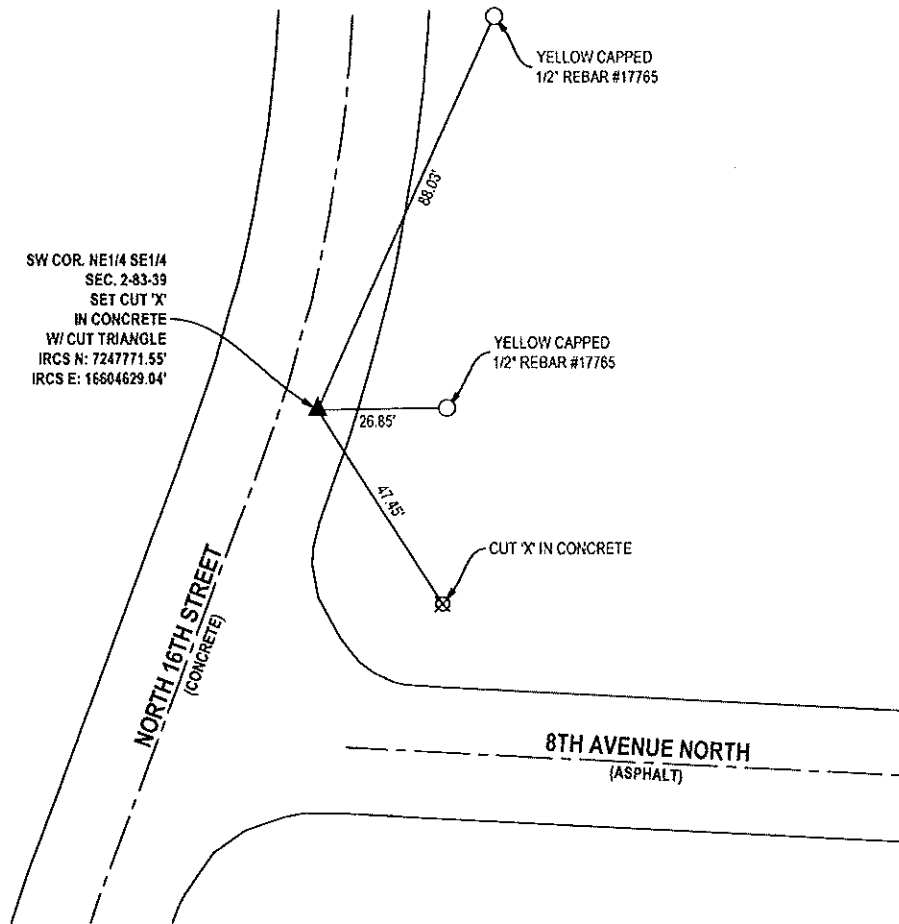
United States Public Land Survey Corner Certificate of Land Survey Monuments situated in Section 2, Township 83 North, Range 39 West of the Fifth Principal Meridian, Crawford County, Iowa.

SW Cor. NE1/4 SE1/4.: Searched area using information from the following Plats of Survey: Instr. # 93-0139 (noted as Set 5/8" x 18" Iron Pin w/ Cap #4129), Instr. # 93-1844 (noted as 5/8" x 18" Iron Pin w/ Cap #4129), and Instr. # 2000-0917 (noted as Iron Pin) all located in the Office of the Crawford County Recorder, with nothing found. Set Cut 'X' with Cut Triangle in concrete online and by proportioning record distances between the SW Cor. N1/2 SE1/4 SE1/4 and the NW Cor. S1/2 NE1/4 SE1/4. Reason For Filing: There is no certificate on file for this Corner. Corner used on Survey in the SE1/4.

Requestor: City of Denison

Proprietor: City of Denison

BEI Project #: S24078



NOTES:

1. PLAN-VIEW IS NOT TO SCALE.
2. ALL TIES REPRESENT HORIZONTAL DISTANCES MEASURED USING THE U.S. SURVEY FOOT.
3. COORDINATES SHOWN FROM THE IOWA REGIONAL COORDINATE SYSTEM, ZONE 6: COUNCIL BLUFFS.



I hereby certify that this land surveying document was prepared and the related survey work was performed by me or under my direct personal supervision and that I am a duly licensed Professional Land Surveyor under the laws of the State of Iowa.

Date: 5/24/24 *Brad M. Beck*
 Brad M. Beck, P.E., P.L.S. #17765
 License renewal date: 12/31/2025
 Pages certified by this seal: 1

BECK ENGINEERING, INC.



Civil Engineering - Land Surveying
 Landscape Architecture