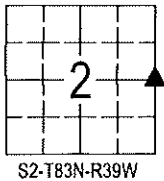


LOCATION MAP CORNER INDEX:



1. E 1/4 Cor.

Sara Meseck, RECORDER
 Crawford County, Iowa
 Instr. Number: 2024-0886
 Recorded: 5/29/2024 at 9:58:16.0 AM
 Pages 1
 County Recording Fee: \$7.00
 Iowa E-Filing Fee: \$3.13
 Combined Fee: \$10.13
 Revenue Tax:

This document prepared by : Beck Engineering, Inc. - Brad M. Beck, P.E., P.L.S. #17765
 110 East Indian Street, Cherokee, Iowa 51012 (info@beck-engineering.net) (712) 225-9025

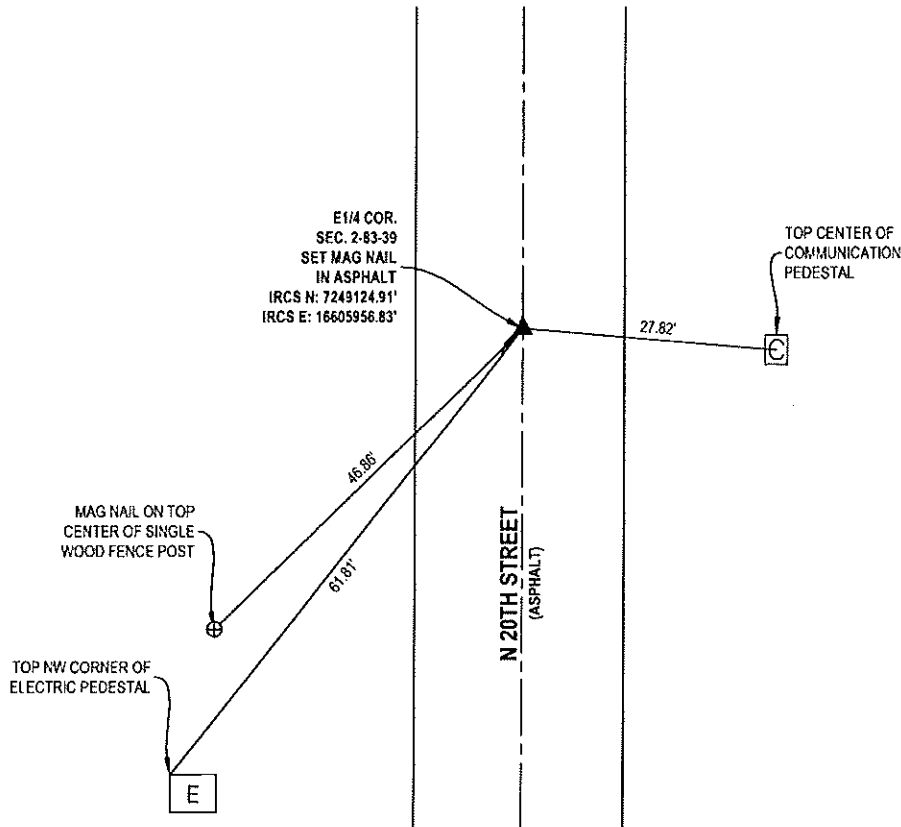
United States Public Land Survey Corner Certificate of Land Survey Monuments situated in Section 2, Township 83 North, Range 39 West of the Fifth Principal Meridian, Crawford County, Iowa.

E1/4 Cor.: Searched area with metal detector using information from previous Section Corner Certificate dated May 27, 1992 recorded as Instr. # 92-12990 (noted as 5/8" Rebar in 4" x 4" Conc.) located in the Office of the Crawford County Recorder (1 of 4 ties remain). Also used information from the following Plats of Survey recorded as: Instr. # 93-0139 (noted as PK Nail), Instr. # 95-0369 (noted as PK Nail), Instr. # 2003-3813 (noted as 5/8" Dia. Rebar in Conc.), Instr. # 2015-0858 (noted as PK Nail), Instr. # 2015-0860 (noted as PK Nail), Instr. # 2019-1642 (noted as 80D Spike), Instr. # 2020-0147 (noted as 5/8" Dia. Rebar in Conc.) and Instr. #2022-1729 (noted as 80D Spike) all of which are located in the Office of the Crawford County Recorder, with nothing found. Set Mag Nail near the centerline of N 20th Street (asphalt) online and by proportioning record distances between the NE Cor. and SE Cor. Reason For Filing: Set new monument at Corner. Corner used on Survey in the SE 1/4.

Requestor: City of Denison

Proprietor: City of Denison

BEI Project #: S24078



NOTES:

1. PLAN-VIEW IS NOT TO SCALE.
2. ALL TIES REPRESENT HORIZONTAL DISTANCES MEASURED USING THE U.S. SURVEY FOOT.
3. COORDINATES SHOWN FROM THE IOWA REGIONAL COORDINATE SYSTEM, ZONE 6: COUNCIL BLUFFS.



I hereby certify that this land surveying document was prepared and the related survey work was performed by me or under my direct personal supervision and that I am a duly licensed Professional Land Surveyor under the laws of the State of Iowa.

Date: 5/29/24 *Brad M. Beck*
 Brad M. Beck, P.E., P.L.S. #17765

License renewal date: 12/31/2025
 Pages certified by this seal: 1

BECK ENGINEERING, INC.



Civil Engineering - Land Surveying
 Landscape Architecture