

Instrument #: 2024-1044
 08/17/2024 03:21:50 PM Total Pages: 1
 PLC PLAT COR CERT
 Recording Fee: \$7.00 Transfer Tax: \$0
 Sara Mesack, Recorder, Crawford County Iowa



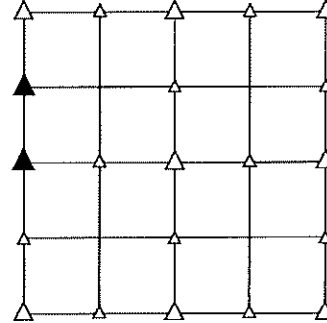
PREPARED BY - TERENCE E. CRAWFORD - SUNDQUIST ENGINEERING - 120 S. MAIN, DENISON, IOWA 51442 - PHONE (712) 263-8118

UNITED STATES PUBLIC LAND SURVEY CORNER CERTIFICATE
 OF

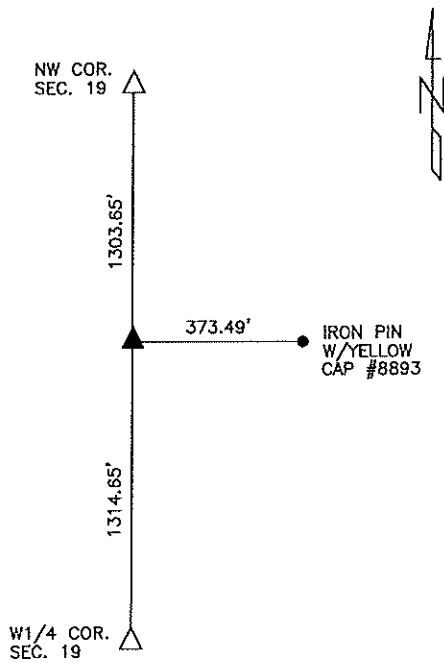
LAND SURVEY MONUMENT SITUATED IN SECTION 19, T 83 N, R 38 W OF
 THE 5TH P.M., CRAWFORD COUNTY, IOWA.
 PREVIOUSLY RECORDED IN BOOK , PAGE , OTHER

MONUMENT DESCRIPTION AND REMARKS

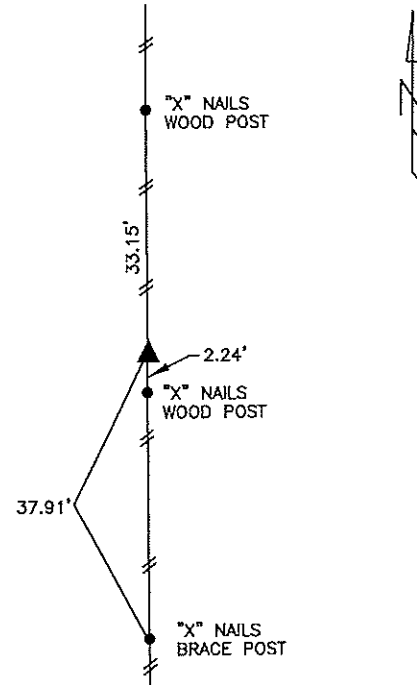
NW CORNER
 SW1/4 NW1/4 - SET 5/8" DIA. X 18" IRON PIN W/YELLOW CAP
 #8893 FLUSH. SET USING PREVIOUS SURVEY
 INFORMATION.
 W1/4 CORNER - SET 5/8" DIA. X 18" IRON PIN W/YELLOW CAP
 #8893 FLUSH.



PLAN VIEW SHOWING RELATIVE LOCATION OF MONUMENT AND REFERENCE POINTS.



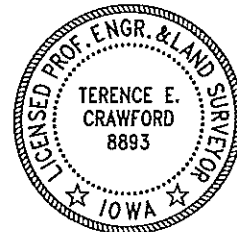
DISTANCES PLUMB CHAINED
 NW CORNER SW1/4 NW1/4
 SECTION 19-83-38



DISTANCES PLUMB CHAINED
 W1/4 CORNER SECTION 19-83-38

I HEREBY CERTIFY THAT THIS LAND SURVEYING DOCUMENT WAS PREPARED AND THE RELATED SURVEY WORK WAS PERFORMED BY ME OR UNDER MY DIRECT PERSONAL SUPERVISION AND THAT I AM A DULY LICENSED LAND SURVEYOR UNDER THE LAWS OF THE STATE OF IOWA.

Terence E. Crawford 5-16-24
 TERENCE E. CRAWFORD DATE
 IA LICENSE NO. 8893 DATE DECEMBER 31, 2025



SE PROJECT NO. 22324
 DRAWN BY: LLL