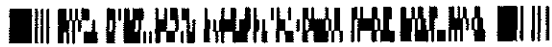


Instrument #: 2024-2408  
12/06/2024 09:58:00 AM Total Pages: 1  
PLC PLAT COR CERT  
Recording Fee: \$7.00 Transfer Tax: \$0  
Sara Meseck, Recorder, Crawford County Iowa



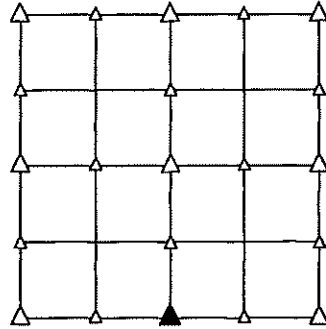
PREPARED BY - TERENCE E. CRAWFORD - SUNDBQUIST ENGINEERING - 120 S. MAIN, DENISON, IOWA 51442 - PHONE (712) 263-8118

### UNITED STATES PUBLIC LAND SURVEY CORNER CERTIFICATE OF

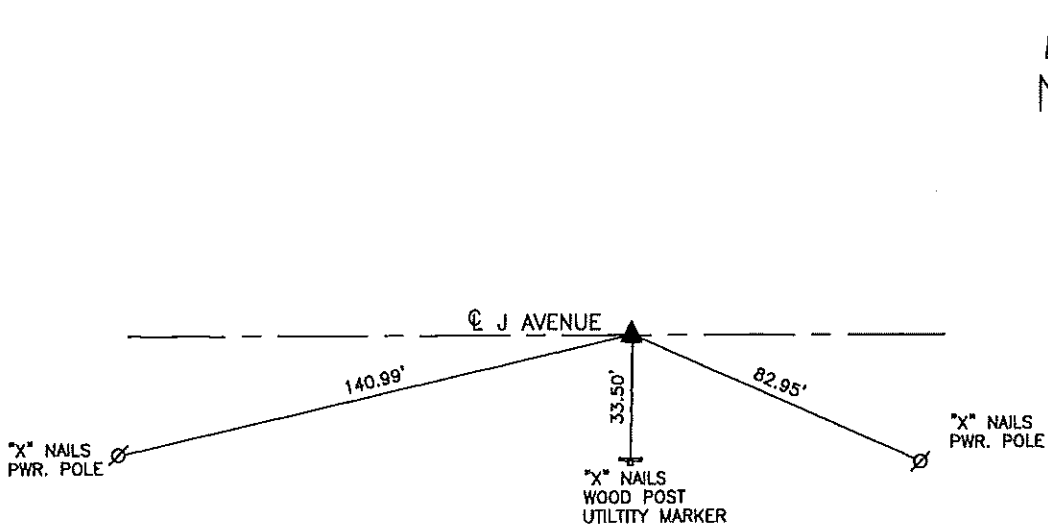
LAND SURVEY MONUMENT SITUATED IN SECTION 17, T 84 N, R 41 W OF  
THE 5TH P.M., CRAWFORD COUNTY, IOWA.  
PREVIOUSLY RECORDED IN BOOK \_\_\_\_\_, PAGE \_\_\_\_\_, OTHER \_\_\_\_\_

#### MONUMENT DESCRIPTION AND REMARKS

S1/4 CORNER - SET 5/8" DIA. X 18" IRON PIN W/YELLOW CAP  
#8893 0.5' DEEP. RESET USING PREVIOUS CORNER  
TIE INFORMATION.



#### PLAN VIEW SHOWING RELATIVE LOCATION OF MONUMENT AND REFERENCE POINTS.



DISTANCES PLUMB CHAINED

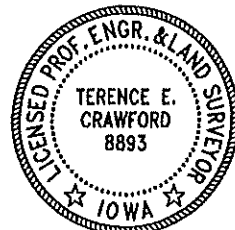
S1/4 CORNER SECTION 17-84-41

I HEREBY CERTIFY THAT THIS LAND SURVEYING DOCUMENT WAS PREPARED  
AND THE RELATED SURVEY WORK WAS PERFORMED BY ME OR UNDER MY  
DIRECT PERSONAL SUPERVISION AND THAT I AM A DULY LICENSED LAND  
SURVEYOR UNDER THE LAWS OF THE STATE OF IOWA.

*Terence E. Crawford* 11-14-24

TERENCE E. CRAWFORD  
IA LICENSE NO. 8893

DATE  
EXP. DATE DECEMBER 31, 2025



SE PROJECT NO. 25824  
DRAWN BY: LLL